



# FLEURY

— CATTLE CO —

*2 Year-Old* BLACK ANGUS BULL SALE

THE SOURCE FOR CANADIAN  ANGUS GENETICS

— Wednesday, April 9, 2025- Sale Time 3 pm - At the Ranch, Aberdeen, SK —

# *How to* **FIND US**



City of  
Saskatoon



**Highway 5**

**Highway 41**

27 km

Aberdeen Access

**785 Grid**

24.2 km



**Town of  
Aberdeen**

**Fleury Cattle Company**

*Hague Ferry Crossing*



2.9 km

**Fleury Cattle Company Sign**







**FLEURY CATTLE COMPANY**  
*Matthew & Cassie Fleury*

Phone: 306-291-3960

Box 177 Aberdeen, SK, S0K 0A0  
Email: fleurycattleco@hotmail.com  
Web: www.fleurycattlecompany.com



*It is an honour to welcome you* to Fleury Cattle Company's 2025 Two-Year-Old Black Angus Bull Sale. We are extremely proud of this year's sale offering. There are many elements that make this year's sale special for us, one being that we are proud to say that 95% of this year's offering is sired by our home raised bulls. We know these cattle and continue to breed and market them with the utmost confidence for our customers; this would not be possible without the continued trust and support from our customers. I feel very privileged to be able to work with the quality cattle producers that we do. These loyal relationships are cherished and I truly appreciate our customers. Thank you.

This year marks 24 years as a seedstock operation. We have seen much change over this time but one constant for us has been our vision for breeding Angus cattle. We understand the importance of improving genetics. We do not chase fads or follow trends but instead continue to build off our proven genetics to offer predictability for our customers.

It is an opportune time to be in the cattle industry. However, as production costs rise it has never been more critical to raise cattle excelling in natural growth. We at Fleury Cattle Company believe performance drives profit and continue to breed performance cattle with the most current outcross Canadian Angus genetics available today.

On offer this year will be 55 two-year-old Black Angus bulls. The sires of these bulls are carefully selected and backed by our prominent cow families; these lines have contributed to the success of our program. Our genetics have been tried and tested, eliminating any guess work and ensuring future success for our customers. When sourcing breeding stock from Fleury Cattle Company you are investing in a proven breeding program. Many of the bulls on offer are  $\frac{1}{2}$  or  $\frac{3}{4}$  brothers, enforcing dependable genetics necessary to guarantee quality and predictability.

We invite you out to the ranch anytime prior to the sale to view our sale offering. All sale bulls will have videos on DLMS and our website for you to view at your own convenience. We encourage you to attend the sale in person and look forward to seeing you sale day.

Sincerely,

*Matt Fleury*

*Join Us*  
**after the sale for a complimentary  
BBQ steak supper and social**



## SALES STAFF

### *Auctioneer*

Col Steve Dorran ..... 760-972-7736

### *Ring Service*

Craig Flewelling ..... 403-556-0515

### *Ring Service*

Dory Gerrard..... 403-302-1016

Michael Fleury ..... 306-370-5022

Alvin Busby ..... 306-227-0575

Kirk Hurlburt ..... 306-222-8210

Ryan Hurlburt ..... 306-292-9812

## LIVESTOCK INSURANCE AGENT

Stockmens Insurance, Larry Toner ..... 306-834-7652

## BID LIVE AND ONLINE

Mark Shologan ..... 780-699-5082  
[www.dlms.ca](http://www.dlms.ca)

## STANDING BEHIND WHAT WE SELL

All bulls in the sale are semen tested, scrotal measured, and vet inspected by a licensed veterinarian. All buyers will be provided with a semen evaluation certificate.

## SIGHT UNSEEN PURCHASE PLAN

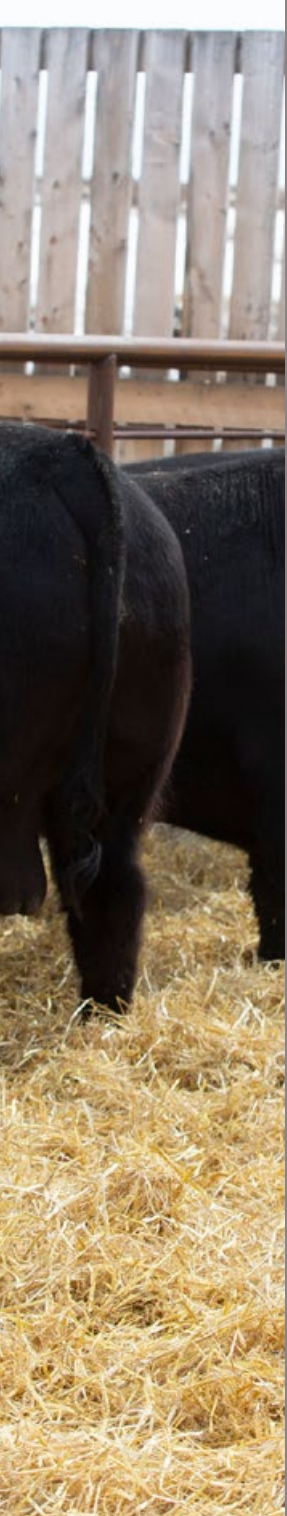
If you are unable to attend the sale, you can have Matt handle your purchase. Nobody knows the bulls better than Matt and he can assist you in the selection of your bull. Please contact him by phone at 306-291-3960.

## TRUCKING

Free delivery to Saskatchewan, Manitoba, and Alberta. For purchases going beyond, we will help accommodate delivery as economically as we can. All bulls will be delivered to your farm or central points following the sale.







## ■ TERMS AND CONDITIONS

**TERMS** The terms of the sale are cash or cheque, payable at par at the sale location. The right of property shall not pass until after settlement has been made; no invoicing on buyers in attendance unless previous arrangements have been made. Every animal sells to the highest bidder and, in cases of disputes, the auctioneer's decision will be final.

Announcements from the auction block will take precedence over the printed matter in the catalogue. Current exchange rates will be announced on sale day. All monies are in Canadian funds.

**CERTIFICATE OF REGISTRATION** Each animal will carry papers issued by the Canadian Angus Association. A certificate of registry duly transferred will be furnished to the buyer for each animal after payment has been made.

**HEALTH** All animals in the sale have met all necessary health requirements.

**GUARANTEE** Each animal becomes the purchaser's risk immediately after the animal is sold. All animals in this sale will be sold under the terms and guarantees set forth by the Canadian Angus Association with regard to health, freedom from defects, and from both reproductive and specific genetic unsoundness.

**LIABILITIES** All persons attend the sale at their own risk. The seller, facility owner, auctioneer, and sale staff assume no liability, legal or otherwise, for any accidents that occur.

**INSURANCE** Agents will be in attendance to insure your purchases. We strongly recommend that insurance is purchased for full value.

**THE RIGHT TO COLLECT SEMEN** Fleury Cattle Company reserve the right to collect semen for within herd use on any of the bulls sold at their expense and the buyer's convenience.



*An essential part  
of our team:*

**BEN ENS**

HERDSMAN AND  
FARM OPERATIONS

**Internet Bidding Available**



For more information call:  
Mark Shologan 780-699-5082 or Purebred Team 780-991-3025

## ■ BULL DEVELOPMENT

I believe bull development starts from the day they are born. At Fleury Cattle Company, calving starts April 20th; the calves are born on grass in their natural environment. Canadian winters get very cold and spring calving eliminates any stress that the cow and calf may experience by calving in the cold. Calving on grass is virtually stress free for mama and baby.

The calves are raised on the cow for six months with no creep feed. Calves are weaned in November and in the first year the yearlings are put on a TMR ration not exceeding 1% of body weight of grain per day, maintaining a 2.5 lb daily gain. Feeding the bulls out on a light ration promotes growth development; the bulls are not pushed. The first week in May they are then turned out on seeded forage pastures where these bulls grow frame and are developed in a natural environment. The bulls walk for their feed while grazing all summer. This grazing process develops their athletic ability, frames the bulls out, and develops their joints and muscle at an acceptable pace.

We bring these bulls home from grass in early fall and they are put on a TMR ration designed for a 3-3.5 lbs daily gain. These bulls are developed with longevity in mind. On sale day these bulls will have reached 75% of their mature weight as a two-year-old. Running two-year-old bulls gives a better idea of what that bull is going to mature into. Two-year-old bulls are capable of covering more cows and require less development. We believe a two-year-old bull is past the calf stage, knows he is a breeding bull, and is ready to go out and breed cows.

As agriculture evolves we notice farms and ranches expanding. With this growth, operations need to be more efficient and economical to sustain a profitable operation. Due to ranchers expanding their cow herds, cattle are run in larger groups and the demand for two-year-old bulls has never been greater.

Fleury Cattle Company only sells two-year-old bulls and every bull goes through our bull sale. No yearling or two-year-old bulls are sold off the ranch. We believe in developing our bulls for our customer. We are proud of the fact that all bulls sale day are ready to breed and cover more cows and also have a better chance of survival when turned out into multiple breeding fields.

## ■ FLEURY CATTLE COMPANY EPDS

As a seed stock producer, Fleury Cattle Company is committed in providing accurate data. Straight Canadian EPD data has not accumulated enough accuracy to become a true reflection on these genetics. We continue to work with the Canadian Angus Association to build accurate EPDS on Canadian bred cattle.





# TRIE NORTH

## FUTURE HERDSIRE



**FS**

### FLEURY TRUE NORTH 33L

DAM — SIRE

SEALIN CREEK NORTHERN 15A  
**FLEURY NORTHERN 12D**  
FLEURY ELENA 34Y

FLEURY BARDOLENE 89E  
**FLEURY PRINCESS 36G**  
FLEURY PRINCESS 37E

ANGUS ACRES NORTHERN 92W  
SEALIN CREEK ROSEBUD 52T  
DOUBLE AA BARDOLENE 50'08  
FLEURY ANNIE K 22T

RANCHERS CHOICE BARDOLENE 112C  
FIGURE 8 ANGUS STUMPIE 44U  
FLEURY BARDOLIER 59B  
FLEURY PRINCESS 95Z

2335581 • FAR 33L • April 22 2023

EPDS	CED	BW	WW	YW	MILK	CEM	PERF	BW	Adj WW	Adj YW
	0	2.5	33	62	11	7		81	691	1205

As we have watched the Northern females mature in our cowherd, we have really grown to appreciate the longevity, femininity, and quality udders that this line of cattle offers. Fleury True North 33L is a bull that combines everything that we look for in a herd bull. He is packed with style, extremely heavy muscled, and just has that herd bull look. His dam, Fleury Princess 36G, is a female that is long, feminine, and has proven herself to be quite the producer. The Princess cow family has been a top cow family in our program for many years. FAR 33L's sire, Fleury Northern 12D, was extremely sound footed, deep-bodied, and heavy-muscled. We have great expectations for this young herd bull and believe Fleury True North 33L will have a major impact on the future of our breeding program.





Lot 2

Northern 12D Sons



FAR 156J Maternal Brother to Lot 2

*Lot* **1**

*Suitable FOR HEIFERS*

## FLEURY NORTHERN 41L

<p>SEALIN CREEK NORTHERN 15A <b>FLEURY NORTHERN 12D</b> FLEURY ELENA 34Y</p> <p>GLEN ISLAY HEADLINER 12E <b>FLEURY ANNIE K 7H</b> FLEURY ANNIE K 56E</p>	<p>ANGUS ACRES NORTHERN 92W SEALIN CREEK ROSEBUD 52T DOUBLE AA BARDOLENE 50'08 FLEURY ANNIE K 22T</p> <p>REMINGTON HEADS UP 44Y DOUBLE AA ANNIE K 203'06 FLEURY BARDOLIER 59B FLEURY ANNIE K 36B</p>
--	--

2335392 · FAR 41L · April 25 2023

EPDS	CED	BW	WW	YW	MILK	CEM	PERF	BW	Adj WW	Adj YW
	-1	2	29	45	13	8		89	654	1107

*Lot* **2**

## FLEURY NORTHERN 88L

<p>SEALIN CREEK NORTHERN 15A <b>FLEURY NORTHERN 12D</b> FLEURY ELENA 34Y</p> <p>DOUBLE AA BARDOLENE 150A <b>FLEURY RUBY 71D</b> FLEURY RUBY 86Y</p>	<p>ANGUS ACRES NORTHERN 92W SEALIN CREEK ROSEBUD 52T DOUBLE AA BARDOLENE 50'08 FLEURY ANNIE K 22T</p> <p>DOUBLE AA BARDOLENE 50'08 DOUBLE AA ANNIE K 83'08 DOUBLE AA BLACKMAN 414'06 CC MISS 170 RUBY 3P</p>
---	--

2335561 · FAR 88L · May 05 2023

EPDS	CED	BW	WW	YW	MILK	CEM	PERF	BW	Adj WW	Adj YW
	-1	3.5	38	71	9	8		89	699	1239






Lot 3



Lot 4

Northern 12D Sons

DAM — SIRE		3	<i>Available</i> <b>FOR HEIFERS</b>	<b>FLEURY NORTHERN 99L</b>
		<hr/>		
	SEALIN CREEK NORTHERN 15A		ANGUS ACRES NORTHERN 92W	
	<b>FLEURY NORTHERN 12D</b>		SEALIN CREEK ROSEBUD 52T	
	FLEURY ELENA 34Y		DOUBLE AA BARDOLENE 50'08	
			FLEURY ANNIE K 22T	
			DOUBLE AA BARDOLENE 50'08	
	DOUBLE AA BARDOLENE 48Y		DOUBLE AA ANNIE K 83'08	
<b>DOUBLE AA BLACKBIRD 903D</b>		DOUBLE AA BARDOLENE 422'03		
RANCHERS CHOICE BLACKBIRD 86Y		SASKAL TA PRINCESS 368N		

2335565 · FAR 99L · May 07 2023

EPDS	CED	BW	WW	YW	MILK	CEM	PERF	BW	Adj WW	Adj YW
	1	1.7	28	46	13	7		81	699	1174

<div><div></div><div>5</div></div>		FLEURY NORTHERN 179L	
SIRE	SEALIN CREEK NORTHERN 15A		ANGUS ACRES NORTHERN 92W
	<b>FLEURY NORTHERN 12D</b>		SEALIN CREEK ROSEBUD 52T
	FLEURY ELENA 34Y		DOUBLE AA BARDOLENE 50'08
			FLEURY ANNIE K 22T
			FLEURY BARDOLENE 162B
DAM			<b>FLEURY ANNIE K 56D</b>
			FLEURY ANNIE K 36B
			DOUBLE AA BARDOLENE 50'08
			DOUBLE AA ANNIE K 580'06
			BARDOLENE'S LAD 500'74
			DOUBLE AA ANNIE K 31'06

2342716 · FAR 179L · June 04 2023

EPDS	CED	BW	WW	YW	MILK	CEM	PERF	BW	Adj WW	Adj YW
	-3	3.7	29	54	13	6		90	709	1211



FAR 133J Maternal Brother to Lot 3



FAR 26F Maternal Brother to Lot 3



FAR 36K Maternal Brother to Lot 7

## 6 FLEURY BANDOLIER 7L

FLEURY BANDOLIER 27A  
**FLEURY BANDOLIER 61D**  
 DOUBLE AA ANNIE K 224'05

FLEURY TOM BOY 88B  
**FLEURY MISS ROYCE 132D**  
 FLEURY MISS ROYCE 12Z

JOHNSTON BANDOLIER 170F  
 DOUBLE AA ELENA 38'02  
 DOUBLE AA BARDOLENE 321'02  
 DOUBLE AA ANNIE K 548'03

FIGURE 8 ANGUS TOM BOY 278X  
 FIGURE 8 ANGUS BARBARA 37U  
 ANGUS ACRES WINSTON 249B  
 FLEURY MISS ROYCE 25X

2335492 · FAR 7L · April 16 2023

EPDS	CED	BW	WW	YW	MILK	CEM	PERF	BW	Adj WW	Adj YW
	-3	4	48	85	19	7		95	783	1388

## 7 FLEURY BANDOLIER 24L

FLEURY BANDOLIER 27A  
**FLEURY BANDOLIER 61D**  
 DOUBLE AA ANNIE K 224'05

RANCHERS CHOICE TOMMY 182B  
**FLEURY ANNIE K 135F**  
 FLEURY ANNIE K 140C

JOHNSTON BANDOLIER 170F  
 DOUBLE AA ELENA 38'02  
 DOUBLE AA BARDOLENE 321'02  
 DOUBLE AA ANNIE K 548'03

SEALIN CREEK TOM BOY 14Y  
 SASKALTA ANNIE K 413U  
 RANCHERS CHOICE BLACKMAN 141A  
 DOUBLE AA ANNIE K 558'06

2335353 · FAR 24L · April 21 2023

EPDS	CED	BW	WW	YW	MILK	CEM	PERF	BW	Adj WW	Adj YW
	2	2	43	70	17	7		81	724	1214





**Lot 8**



**Lot 9**

**8 FLEURY BANDOLIER 49L**

DAM — SIRE	FLEURY BANDOLIER 27A <b>FLEURY BANDOLIER 61D</b> DOUBLE AA ANNIE K 224'05	JOHNSTON BANDOLIER 170F DOUBLE AA ELENA 38'02 DOUBLE AA BARDOLENE 321'02 DOUBLE AA ANNIE K 548'03
	FLEURY TOM BOY 88B <b>FLEURY BLACKCAP 13E</b> FLEURY BLACKCAP 11C	FIGURE 8 ANGUS TOM BOY 278X FIGURE 8 ANGUS BARBARA 37U REMINGTON BLACK TOP ERIC 56Y FLEURY BLACKCAP 40X

2336777 · FAR 49L · April 27 2023

EPDS	CED	BW	WW	YW	MILK	CEM	PERF	BW	Adj WW	Adj YW
	-4	4.4	41	72	20	6		97	715	1249



FAR 20G Maternal Brother to Lot 8

**9 FLEURY BANDOLIER 69L**

DAM — SIRE	FLEURY BANDOLIER 27A <b>FLEURY BANDOLIER 61D</b> DOUBLE AA ANNIE K 224'05	JOHNSTON BANDOLIER 170F DOUBLE AA ELENA 38'02 DOUBLE AA BARDOLENE 321'02 DOUBLE AA ANNIE K 548'03
	RANCHERS CHOICE TOMMY 182B <b>FLEURY PRINCESS 81F</b> FLEURY PRINCESS 36X	SEALIN CREEK TOM BOY 14Y SASKALTA ANNIE K 413U DOUBLE AA BLACKMAN 414'06 DOUBLE AA PRINCESS 51'03

2335351 · FAR 69L · May 01 2023

EPDS	CED	BW	WW	YW	MILK	CEM	PERF	BW	Adj WW	Adj YW
	-2	4.1	51	90	14	4		89	785	1355




FAR 73H Maternal Brother to Lot 9



Lot 11

## Bandolier 61D Sons

		<b>FLEURY BANDOLIER 98L</b>	
DAM	SIRE	FLEURY BANDOLIER 27A	
		<b>FLEURY BANDOLIER 61D</b>	
		DOUBLE AA ANNIE K 224'05	
DAM	SIRE	FLEURY TOM BOY 10C	
		<b>FLEURY LADY LASS 119F</b>	
		FLEURY LADY LASS 117C	
		JOHNSTON BANDOLIER 170F	
		DOUBLE AA ELENA 38'02	
		DOUBLE AA BARDOLENE 321'02	
		DOUBLE AA ANNIE K 548'03	
		SEALIN CREEK TOM BOY 14Y	
		FLEURY ANNIE K 74X	
		FLEURY BARDOLENE 49X	
		FLEURY LADY LASS 18T	

2336781 · FAR 98L · May 07 2023

EPDS	CED	BW	WW	YW	MILK	CEM	PERF	BW	Adj WW	Adj YW
	-4	4	42	69	15	6		96	679	1202

<div><div>11</div><div><div></div><div></div><div></div><div></div><div></div><div></div><div></div><div></div><div></div><div></div><div></div><div></div><div></div><div></div><div></div><div></div><div></div><div></div><div></div><div></div><div></div><div></div><div></div><div></div><div></div><div></div><div></div><div></div><div></div><div></div><div></div><div></div><div></div><div></div><div></div><div></div><div></div><div></div><div></div><div></div><div></div><div></div><div></div><div></div><div></div><div></div><div></div><div></div><div></div><div></div><div></div><div></div><div></div><div></div><div></div><div></div><div></div><div></div><div></div><div></div><div></div><div></div><div></div><div></div><div></div><div></div><div></div><div></div><div></div><div></div><div></div><div></div><div></div><div></div><div></div><div></div><div></div><div></div><div></div><div></div><div></div><div></div><div></div><div></div><div></div><div></div><div></div><div></div><div></div><div></div><div></div><div></div><div></div><div></div><div></div><div></div><div></div><div></div><div></div><div></div><div></div><div></div><div></div><div></div><div></div><div></div><div></div><div></div><div></div><div></div><div></div><div></div><div></div><div></div><div></div><div></div><div></div><div></div><div></div><div></div><div></div><div></div><div></div><div></div><div></div><div></div><div></div><div></div><div></div><div></div><div></div><div></div><div></div><div></div><div></div><div></div><div></div><div></div><div></div><div></div><div></div><div></div><div></div><div></div><div></div><div></div><div></div><div></div><div></div><div></div><div></div><div></div><div></div><div></div><div></div><div></div><div></div><div></div><div></div><div></div><div></div><div></div><div></div><div></div><div></div><div></div><div></div><div></div><div></div><div></div><div></div><div></div><div></div><div></div><div></div><div></div><div></div><div></div><div></div><div></div><div></div><div></div><div></div><div></div><div></div><div></div><div></div><div></div><div></div><div></div><div></div><div></div><div></div><div></div><div></div><div></div><div></div><div></div><div></div><div></div><div></div><div></div><div></div><div></div><div></div><div></div><div></div><div></div><div></div><div></div><div></div><div></div><div></div><div></div><div></div><div></div><div></div><div></div><div></div><div></div><div></div><div></div><div></div><div></div><div></div><div></div><div></div><div></div><div></div><div></div><div></div><div></div><div></div><div></div><div></div><div></div><div></div><div></div><div></div><div></div><div></div><div></div><div></div><div></div><div></div><div></div><div></div><div></div><div></div><div></div><div></div><div></div><div></div><div></div><div></div><div></div><div></div><div></div><div></div><div></div><div></div><div></div><div></div><div></div><div></div><div></div><div></div><div></div><div></div><div></div><div></div><div></div><div></div><div></div><div></div><div></div><div></div><div></div><div></div><div></div><div></div><div></div><div></div><div></div><div></div><div></div><div></div><div></div><div></div><div></div><div></div><div></div><div></div><div></div><div></div><div></div><div></div><div></div><div></div><div></div><div></div><div></div><div></div><div></div><div></div><div></div><div></div><div></div><div></div><div></div><div></div><div></div><div></div><div></div><div></div><div></div><div></div><div></div><div></div><div></div><div></div><div></div><div></div><div></div><div></div><div></div><div></div><div></div><div></div><div></div><div></div><div></div><div></div><div></div><div></div><div></div><div></div><div></div><div></div><div></div><div></div><div></div><div></div><div></div><div></div><div></div><div></div><div></div><div></div><div></div><div></div><div></div><div></div><div></div><div></div><div></div><div></div><div></div><div></div><div></div><div></div><div></div><div></div><div></div><div></div><div></div><div></div><div></div><div></div><div></div><div></div><div></div><div></div><div></div><div></div><div></div><div></div><div></div><div></div><div></div><div></div><div></div><div></div><div></div><div></div><div></div><div></div><div></div><div></div><div></div><div></div><div></div><div></div><div></div><div></div><div></div><div></div><div></div><div></div><div></div><div></div><div></div><div></div><div></div><div></div><div></div><div></div><div></div><div></div><div></div><div></div><div></div><div></div><div></div><div></div><div></div><div></div><div></div><div></div><div></div><div></div><div></div><div></div><div></div><div></div><div></div><div></div><div></div><div></div><div></div><div></div><div></div><div></div><div></div><div></div><div></div><div></div><div></div><div></div><div></div><div></div><div></div><div></div><div></div><div></div><div></div><div></div><div></div><div></div><div></div><div></div><div></div><div></div><div></div><div></div><div></div><div></div><div></div><div></div><div></div><div></div><div></div><div></div><div></div><div></div><div></div><div></div><div></div><div></div><div></div><div></div><div></div><div></div><div></div><div></div><div></div><div></div><div></div><div></div><div></div><div></div><div></div><div></div><div></div><div></div><div></div><div></div><div></div><div></div><div></div><div></div><div></div><div></div><div></div><div></div><div></div><div></div><div></div><div></div><div></div><div></div><div></div><div></div><div></div><div></div><div></div><div></div><div></div><div></div><div></div><div></div><div></div><div></div><div></div><div></div><div></div><div></div><div></div><div></div><div></div><div></div><div></div><div></div><div></div><div></div><div></div><div></div><div></div><div></div><div></div><div></div><div></div><div></div><div></div><div></div><div></div><div></div><div></div><div></div><div></div><div></div><div></div><div></div><div></div><div></div><div></div><div></div><div></div><div></div><div></div><div></div><div></div><div></div><div></div><div></div><div></div><div></div><div></div><div></div><div></div><div></div><div></div><div></div><div></div><div></div><div></div><div></div><div></div><div></div><div></div><div></div><div></div><div></div><div></div><div></div><div></div><div></div><div></div><div></div><div></div><div></div><div></div><div></div><div></div><div></div><div></div><div></div><div></div><div></div><div></div><div></div><div></div><div></div><div></div><div></div><div></div><div></div><div></div><div></div><div></div><div></div><div></div><div></div><div></div><div></div><div></div><div></div><div></div><div></div><div></div><div></div><div></div><div></div><div></div><div></div><div></div><div></div><div></div><div></div><div></div><div></div><div></div><div></div><div></div><div></div><div></div><div></div><div></div><div></div><div></div><div></div><div></div><div></div><div></div><div></div><div></div><div></div><div></div><div></div><div></div><div></div><div></div><div></div><div></div><div></div><div></div><div></div><div></div><div></div><div></div><div></div><div></div><div></div><div></div><div></div><div></div><div></div><div></div><div></div><div></div><div></div><div></div><div></div><div></div><div></div><div></div><div></div><div></div><div></div><div></div><div></div><div></div><div></div><div></div><div></div><div></div><div></div><div></div><div></div><div></div><div></div><div></div><div></div><div></div><div></div><div></div><div></div><div></div><div></div><div></div><div></div><div></div><div></div><div></div><div></div><div></div><div></div><div></div><div></div><div></div><div></div><div></div><div></div><div></div><div></div><div></div><div></div><div></div><div></div><div></div><div></div><div></div><div></div><div></div><div></div><div></div><div></div><div></div><div></div><div></div><div></div><div></div><div></div><div></div><div></div><div></div><div></div><div></div><div></div><div></div><div></div><div></div><div></div><div></div><div></div><div></div><div></div><div></div><div></div><div></div><div></div><div></div><div></div><div></div><div></div><div></div><div></div><div></div><div></div><div></div><div></div><div></div><div></div><div></div><div></div><div></div><div></div><div></div><div></div><div></div><div></div><div></div><div></div><div></div><div></div><div></div><div></div><div></div><div></div><div></div><div></div><div></div><div></div><div></div><div></div><div></div><div></div><div></div><div></div><div></div><div></div><div></div><div></div><div></div><div></div><div></div><div></div><div></div><div></div><div></div><div></div><div></div><div></div><div></div><div></div><div></div><div></div><div></div><div></div><div></div><div></div><div></div><div></div><div></div><div></div><div></div><div></div><div></div><div></div><div></div><div></div><div></div><div></div><div></div><div></div><div></div><div></div><div></div><div></div><div></div><div></div><div></div><div></div><div></div><div></div><div></div><div></div><div></div><div></div><div></div><div></div><div></div><div></div><div></div><div></div><div></div><div></div><div></div><div></div><div></div><div></div><div></div><div></div><div></div><div></div><div></div><div></div><div></div><div></div><div></div><div></div><div></div><div></div><div></div><div></div><div></div><div></div><div></div><div></div><div></div><div></div><div></div><div></div><div></div><div></div><div></div><div></div><div></div><div></div><div></div><div></div><div></div><div></div><div></div><div></div><div></div><div></div><div></div><div></div><div></div><div></div><div></div><div></div><div></div><div></div><div></div><div></div><div></div><div></div><div></div><div></div><div></div><div></div><div></div><div></div><div></div><div></div><div></div><div></div><div></div><div></div><div></div><div></div><div></div><div></div><div></div><div></div><div></div><div></div><div></div><div></div><div></div><div></div><div></div><div></div><div></div><div></div><div></div><div></div><div></div><div></div><div></div><div></div><div></div><div></div><div></div><div></div><div></div><div></div><div></div><div></div><div></div><div></div><div></div><div></div><div></div><div></div><div></div><div></div><div></div><div></div><div></div><div></div><div></div><div></div><div></div><div></div><div></div><div></div><div></div><div></div><div></div><div></div><div></div><div></div><div></div><div></div><div></div><div></div><div></div><div></div><div></div><div></div><div></div><div></div><div></div><div></div><div></div><div></div><div></div><div></div><div></div><div></div><div></div><div></div><div></div><div></div><div></div><div></div><div></div><div></div><div></div><div></div><div></div><div></div><div></div><div></div><div></div><div></div><div></div><div></div><div></div><div></div><div></div><div></div><div></div><div></div><div></div><div></div><div></div><div></div><div></div><div></div><div></div><div></div><div></div><div></div><div></div><div></div><div></div><div></div><div></div><div></div><div></div><div></div><div></div><div></div><div></div><div></div><div></div><div></div><div></div><div></div><div></div><div></div><div></div><div></div><div></div><div></div><div></div><div></div><div></div><div></div><div></div><div></div><div></div><div></div><div></div><div></div><div></div><div></div><div></div><div></div><div></div><div></div><div></div><div></div><div></div><div></div><div></div><div></div><div></div><div></div><div></div><div></div><div></div><div></div><div></div><div></div><div></div><div></div><div></div><div></div><div></div><div></div><div></div><div></div><div></div><div></div><div></div><div></div><div></div><div></div><div></div><div></div><div></div><div></div><div></div><div></div><div></div><div></div><div></div><div></div><div></div><div></div><div></div><div></div><div></div><div></div><div></div><div></div><div></div><div></div><div></div><div></div><div></div><div></div><div></div><div></div><div></div><div></div><div></div><div></div><div></div><div></div><div></div><div></div><div></div><div></div><div></div><div></div><div></div><div></div><div></div><div></div><div></div><div></div><div></div><div></div><div></div><div></div><div></div><div></div><div></div><div></div><div></div><div></div><div></div><div></div><div></div><div></div><div></div><div></div><div></div><div></div><div></div><div></div><div></div><div></div><div></div><div></div><div></div><div></div><div></div><div></div><div></div><div></div><div></div><div></div><div></div><div></div><div></div><div></div><div></div><div></div><div></div><div></div><div></div><div></div><div></div><div></div><div></div><div></div><div></div><div></div><div></div><div></div><div></div><div></div><div></div><div></div><div></div><div></div><div></div><div></div><div></div><div></div><div></div><div></div><div></div><div></div><div></div><div></div><div></div><div></div><div></div><div></div><div></div><div></div><div></div><div></div><div></div><div></div><div></div><div></div><div></div><div></div><div></div><div></div><div></div><div></div><div></div><div></div><div></div><div></div><div></div><div></div><div></div><div></div><div></div><div></div><div></div><div></div><div></div><div></div><div></div><div></div><div></div><div></div><div></div><div></div><div></div><div></div><div></div><div></div><div></div><div></div><div></div><div></div><div></div><div></div><div></div><div></div><div></div><div></div><div></div>&lt;</div></div>	
---	--

2336775 · FAR 112L · May 09 2023

EPDS	CED	BW	WW	YW	MILK	CEM	PERF	BW	Adj WW	Adj YW
	-1	2.6	32	58	19	6		91	679	1235







Lot 12

**Bandolier 61D Sons**

## 12 FLEURY BANDOLIER 132L

FLEURY BANDOLIER 27A  
**FLEURY BANDOLIER 61D**  
DOUBLE AA ANNIE K 224'05

RNRF BANDY 96C  
**FLEURY BLACKCAP 126H**  
FLEURY BLACKCAP 58E

JOHNSTON BANDOLIER 170F  
DOUBLE AA ELENA 38'02  
DOUBLE AA BARDOLINE 321'02  
DOUBLE AA ANNIE K 548'03

ANGUS ACRES BANDY 96X  
ANGUS ACRES STARTEL 178K  
FLEURY BARDOLIER 59B  
FLEURY BLACKCAP 98Z

2335473 · FAR 132L · May 13 2023

EPDS	CED	BW	WW	YW	MILK	CEM	PERF	BW	Adj WW	Adj YW
	-3	3.2	36	63	19	7		84	707	1222

## 13 FLEURY BANDOLIER 146L

FLEURY BANDOLIER 27A  
**FLEURY BANDOLIER 61D**  
DOUBLE AA ANNIE K 224'05

FLEURY TOM BOY 17D  
**FLEURY CHOICE LADY 107F**  
RANCHERS CHOICE LADY 132D

JOHNSTON BANDOLIER 170F  
DOUBLE AA ELENA 38'02  
DOUBLE AA BARDOLINE 321'02  
DOUBLE AA ANNIE K 548'03

FLEURY TOM BOY 88B  
FIGURE 8 ANGUS JESTRESS 190Z  
SEALIN CREEK ERIC 17Y  
RANCHERS CHOICE LADY 182Y

2336780 · FAR 146L · May 17 2023

EPDS	CED	BW	WW	YW	MILK	CEM	PERF	BW	Adj WW	Adj YW
	1	2.2	34	60	16	9		84	681	1204

Bandolier 61D Sons

Bardolene 54G Sons



Lot 14

*Lot* 14

## FLEURY BANDOLIER 178L

SIRE

FLEURY BANDOLIER 27A  
**FLEURY BANDOLIER 61D**  
DOUBLE AA ANNIE K 224'05

JOHNSTON BANDOLIER 170F  
DOUBLE AA ELENA 38'02  
DOUBLE AA BARDOLENE 321'02  
DOUBLE AA ANNIE K 548'03

DAM

FLEURY TOM BOY 13C  
**FLEURY BLACKCAP 134E**  
FLEURY BLACKCAP 73A

SEALIN CREEK TOM BOY 14Y  
FLEURY ANNIE K 27Y  
DOUBLE AA BARDOLENE 50'08  
FLEURY BLACKCAP 83W

2361261 · FAR 178L · June 03 2023

EPDS

CED	BW	WW	YW	MILK	CEM	PERF	BW	Adj WW	Adj YW
2	2.4	40	67	15	8		86	709	1209

*Lot* 15

*Suitable*  
FOR HEIFERS

## FLEURY BARDOLENE 15L

DAM — SIRE

DOUBLE AA BARDOLENE 48Y  
**FLEURY BARDOLENE 54G**  
DOUBLE AA ANNIE K 904D

ANGUS ACRES JUMBO 7B  
**FLEURY ANNIE K 53J**  
FLEURY ANNIE K 85Y

DOUBLE AA BARDOLENE 50'08  
DOUBLE AA ANNIE K 83'08  
RANCHERS CHOICE BARDOLIER 109X  
RANCHERS CHOICE ANNIE K 99Y

REMINGTON JUMBO 517Y  
ANGUS ACRES ROYAL VELVET 99R  
SASKALTA ESTON 134W  
DOUBLE AA ANNIE K 393'06

2336802 · FAR 15L · April 20 2023

EPDS

CED	BW	WW	YW	MILK	CEM	PERF	BW	Adj WW	Adj YW
0	1.5	36	50	17	5		73	694	1146

*Lot* 16

## FLEURY BARDOLENE 65L

DAM — SIRE

DOUBLE AA BARDOLENE 48Y  
**FLEURY BARDOLENE 54G**  
DOUBLE AA ANNIE K 904D

GLEN ISLAY HEADLINER 12E  
**FLEURY PRINCESS 19J**  
FLEURY PRINCESS 52A

DOUBLE AA BARDOLENE 50'08  
DOUBLE AA ANNIE K 83'08  
RANCHERS CHOICE BARDOLIER 109X  
RANCHERS CHOICE ANNIE K 99Y

REMINGTON HEADS UP 44Y  
DOUBLE AA ANNIE K 203'06  
SEALIN CREEK TOM BOY 14Y  
FLEURY PRINCESS 36X

2335400 · FAR 65L · April 30 2023

EPDS

CED	BW	WW	YW	MILK	CEM	PERF	BW	Adj WW	Adj YW
-6	4.9	42	69	14	4		89	741	1265







Lot 17

**Bardolene 54G Sons**

*Lot* **17** *Available  
FOR HEIFERS*

## FLEURY BARDOLENE 145L

SIRE  
DOUBLE AA BARDOLENE 48Y  
**FLEURY BARDOLENE 54G**  
DOUBLE AA ANNIE K 904D

DOUBLE AA BARDOLENE 50'08  
DOUBLE AA ANNIE K 83'08  
RANCHERS CHOICE BARDOLIER 109X  
RANCHERS CHOICE ANNIE K 99Y

DAM  
GLEN ISLAY HEADLINER 12E  
**FLEURY ANNIE K 110J**  
FLEURY ANNIE K 30E

REMINGTON HEADS UP 44Y  
DOUBLE AA ANNIE K 203'06  
DOUBLE AA BARDOLENE 150A  
FLEURY ANNIE K 1W

2335403 · FAR 145L · May 17 2023

EPDS	CED	BW	WW	YW	MILK	CEM	PERF	BW	Adj WW	Adj YW
	0	2.8	48	77	18	7		79	794	1342





Lot 18

*Lot* **18** *Suitable FOR HEIFERS*

**FLEURY BARDOLENE 170L**

SIRE	DOUBLE AA BARDOLENE 48Y	DAM	DOUBLE AA BARDOLENE 50'08	EPDS	RANCHERS CHOICE TOMMY 182B					SEALIN CREEK TOM BOY 14Y							
	<b>FLEURY BARDOLENE 54G</b>		DOUBLE AA ANNIE K 83'08		<b>FLEURY ANNIE K 123H</b>					SASKALTA ANNIE K 413U							
	DOUBLE AA ANNIE K 904D		RANCHERS CHOICE BARDOLIER 109X		FLEURY ANNIE K 140C					RANCHERS CHOICE BLACKMAN 141A							
						CED	BW	WW	YW	MILK	CEM	PERF	BW	Adj WW	Adj YW		
2361260 · FAR 170L · May 26 2023						-1	3.1	36	60	13	5		80	631	1145		







Lot 19

**Bardolene 54G Sons**

*Lot* **19**

## FLEURY BARDOLENE 172L

SIRE

DOUBLE AA BARDOLENE 48Y  
**FLEURY BARDOLENE 54G**  
DOUBLE AA ANNIE K 904D

DOUBLE AA BARDOLENE 50'08  
DOUBLE AA ANNIE K 83'08  
RANCHERS CHOICE BARDOLIER 109X  
RANCHERS CHOICE ANNIE K 99Y

DAM

ANGUS ACRES JUMBO 7B  
**FLEURY ELENA 5J**  
FLEURY ELENA 162G

REMINGTON JUMBO 517Y  
ANGUS ACRES ROYAL VELVET 99R  
ANGUS ACRES JUMBO 7B  
FLEURY ELENA 28Y

2336799 · FAR 172L · May 26 2023

EPDS	CED	BW	WW	YW	MILK	CEM	PERF	BW	Adj WW	Adj YW
	-12	5.3	41	65	15	-4		95	742	1235



20

## FLEURY BARDOLENE 81L

SIRE FLEURY BARDOLENE 114E  
**FLEURY BARDOLENE 41H**  
 RANCHERS CHOICE DUCHESS 214D

DOUBLE AA BARDOLENE 150A  
 FLEURY ANNIE K 74X  
 FLEURY WINSTON 10Z  
 RANCHERS CHOICE DUCHESS 223B

DAM RANCHERS CHOICE TOMMY 182B  
**FLEURY ANNIE K 101G**  
 RANCHERS CHOICE ANNIE K 80D

SEALIN CREEK TOM BOY 14Y  
 SASKALTA ANNIE K 413U  
 DOUBLE AA BARDOLENE 48Y  
 SASKALTA ANNIE K 308U

2335358 · FAR 81L · May 04 2023

EPDS	CED	BW	WW	YW	MILK	CEM	PERF	BW	Adj WW	Adj YW
	-4	4.4	35	52	20	6		95	681	1131

21

## FLEURY BARDOLENE 161L

SIRE FLEURY BARDOLENE 114E  
**FLEURY BARDOLENE 41H**  
 RANCHERS CHOICE DUCHESS 214D

DOUBLE AA BARDOLENE 150A  
 FLEURY ANNIE K 74X  
 FLEURY WINSTON 10Z  
 RANCHERS CHOICE DUCHESS 223B

DAM RANCHERS CHOICE TOMMY 182B  
**FLEURY BLACKLASS 132H**  
 FLEURY BLACKLASS 95C

SEALIN CREEK TOM BOY 14Y  
 SASKALTA ANNIE K 413U  
 FLEURY BLACKMAN 76Y  
 FLEURY BLACKLASS 19Z

2335360 · FAR 161L · May 22 2023

EPDS	CED	BW	WW	YW	MILK	CEM	PERF	BW	Adj WW	Adj YW
	-5	4.9	41	63	18	6		88	690	1155

22

## FLEURY BLACKMAN 19L

SIRE RANCHERS CHOICE BLACKMAN 176B  
**FLEURY BLACKMAN 42F**  
 FLEURY BLACKCAP 167B

FLEURY BLACKMAN 76W  
 SASKALTA ANNIE K 238U  
 REMINGTON BLACK TOP ERIC 56Y  
 FLEURY BLACKCAP 39W

DAM ANGUS ACRES JUMBO 7B  
**FLEURY ANNIE K 161H**  
 FLEURY ANNIE K 56D

REMINGTON JUMBO 517Y  
 ANGUS ACRES ROYAL VELVET 99R  
 FLEURY BARDOLENE 162B  
 FLEURY ANNIE K 36B

2336797 · FAR 19L · April 21 2023 · Twin

EPDS	CED	BW	WW	YW	MILK	CEM	PERF	BW	Adj WW	Adj YW
	-3.5	2.4	34	54	16	7.5		73	635	1135







Lot 23

Blackman 42F Sons

*Lot* 23

## FLEURY BLACKMAN 20L

SIRE

RANCHERS CHOICE BLACKMAN 176B  
**FLEURY BLACKMAN 42F**  
FLEURY BLACKCAP 167B

FLEURY BLACKMAN 76W  
SASKALTA ANNIE K 238U  
REMINGTON BLACK TOP ERIC 56Y  
FLEURY BLACKCAP 39W

DAM

ANGUS ACRES JUMBO 7B  
**FLEURY ANNIE K 161H**  
FLEURY ANNIE K 56D

REMINGTON JUMBO 517Y  
ANGUS ACRES ROYAL VELVET 99R  
FLEURY BARDOLENE 162B  
FLEURY ANNIE K 36B

2336795 · FAR 20L · April 21 2023 · Twin

EPDS	CED	BW	WW	YW	MILK	CEM	PERF	BW	Adj WW	Adj YW
	-3.5	2.4	34	54	16	7.5		75	611	1105





Lot 24



Lot 26

## 24 *Suitable FOR HEIFERS* FLEURY BLACKMAN 56L

DAM — SIRE	RANCHERS CHOICE BLACKMAN 176B <b>FLEURY BLACKMAN 42F</b> FLEURY BLACKCAP 167B	FLEURY BLACKMAN 76W SASKALTA ANNIE K 238U REMINGTON BLACK TOP ERIC 56Y FLEURY BLACKCAP 39W
	ANGUS ACRES JUMBO 7B <b>FLEURY COREEN 90H</b> FLEURY COREEN 95D	REMINGTON JUMBO 517Y ANGUS ACRES ROYAL VELVET 99R FLEURY TOM BOY 88B FIGURE 8 ANGUS COREEN 11X

2336792 · FAR 56L · April 29 2023

EPDS	CED	BW	WW	YW	MILK	CEM	PERF	BW	Adj WW	Adj YW
	-3	1.7	29	42	17	8		84	689	1116

## 25 *Suitable FOR HEIFERS* FLEURY BLACKMAN 101L

DAM — SIRE	RANCHERS CHOICE BLACKMAN 176B <b>FLEURY BLACKMAN 42F</b> FLEURY BLACKCAP 167B	FLEURY BLACKMAN 76W SASKALTA ANNIE K 238U REMINGTON BLACK TOP ERIC 56Y FLEURY BLACKCAP 39W
	ANGUS ACRES JUMBO 7B <b>FLEURY HEROINE 159G</b> RANCHERS CHOICE HEROINE 144D	REMINGTON JUMBO 517Y ANGUS ACRES ROYAL VELVET 99R RANCHERS CHOICE TOMMY 182B RANCHERS CHOICE HEROINE 52Z

2336790 · FAR 101L · May 07 2023

EPDS	CED	BW	WW	YW	MILK	CEM	PERF	BW	Adj WW	Adj YW
	0	1.8	27	45	16	9		82	631	1152

## 26 *Suitable FOR HEIFERS* FLEURY BLACKMAN 118L

DAM — SIRE	RANCHERS CHOICE BLACKMAN 176B <b>FLEURY BLACKMAN 42F</b> FLEURY BLACKCAP 167B	FLEURY BLACKMAN 76W SASKALTA ANNIE K 238U REMINGTON BLACK TOP ERIC 56Y FLEURY BLACKCAP 39W
	ANGUS ACRES JUMBO 7B <b>FLEURY MORRISON 129G</b> RANCHERS CHOICE MORRISON 200D	REMINGTON JUMBO 517Y ANGUS ACRES ROYAL VELVET 99R FLEURY WINSTON 10Z RANCHERS CHOICE MORRISON 147B

2336788 · FAR 118L · May 10 2023

EPDS	CED	BW	WW	YW	MILK	CEM	PERF	BW	Adj WW	Adj YW
	-3	2.5	35	53	18	9		86	680	1151







Lot 27

**27**

## FLEURY BLACKMAN 126L

SIRE RANCHERS CHOICE BLACKMAN 176B  
**FLEURY BLACKMAN 42F**  
 FLEURY BLACKCAP 167B

FLEURY BLACKMAN 76W  
 SASKALTA ANNIE K 238U  
 REMINGTON BLACK TOP ERIC 56Y  
 FLEURY BLACKCAP 39W

DAM ANGUS ACRES JUMBO 7B  
**FLEURY ANNIE K 107H**  
 DOUBLE AA ANNIE K 79B

REMINGTON JUMBO 517Y  
 ANGUS ACRES ROYAL VELVET 99R  
 RNRF BARDOLIER 805Y  
 DOUBLE AA ANNIE K 48X

2336794 · FAR 126L · May 12 2023

EPDS	CED	BW	WW	YW	MILK	CEM	PERF	BW	Adj WW	Adj YW
-3	2.7	46	73	16	7	86	759	1283		

**28**

## FLEURY BLACKMAN 131L

SIRE RANCHERS CHOICE BLACKMAN 176B  
**FLEURY BLACKMAN 42F**  
 FLEURY BLACKCAP 167B

FLEURY BLACKMAN 76W  
 SASKALTA ANNIE K 238U  
 REMINGTON BLACK TOP ERIC 56Y  
 FLEURY BLACKCAP 39W

DAM ANGUS ACRES JUMBO 7B  
**FLEURY BLACKBIRD 158G**  
 DOUBLE AA BLACKBIRD 903D

REMINGTON JUMBO 517Y  
 ANGUS ACRES ROYAL VELVET 99R  
 DOUBLE AA BARDOLINE 48Y  
 RANCHERS CHOICE BLACKBIRD 86Y

2336789 · FAR 131L · May 13 2023

EPDS	CED	BW	WW	YW	MILK	CEM	PERF	BW	Adj WW	Adj YW
-3	2.4	28	43	16	6	86	633	1120		

**29**

*Available  
FOR HEIFERS*

## FLEURY BLACKMAN 141L

SIRE RANCHERS CHOICE BLACKMAN 176B  
**FLEURY BLACKMAN 42F**  
 FLEURY BLACKCAP 167B

FLEURY BLACKMAN 76W  
 SASKALTA ANNIE K 238U  
 REMINGTON BLACK TOP ERIC 56Y  
 FLEURY BLACKCAP 39W

DAM FLEURY WINSTON 10Z  
**RANCHERS CHOICE MORRISON 200D**  
 RANCHERS CHOICE MORRISON 147B

ANGUS ACRES WINSTON 249B  
 FLEURY BLACKCAP 40X  
 FLEURY BLACKMAN 76W  
 SASKALTA MS MORRISON 182T

2335383 · FAR 141L · May 15 2023

EPDS	CED	BW	WW	YW	MILK	CEM	PERF	BW	Adj WW	Adj YW
-2	3.2	36	57	20	10	88	701	1189		



Lot 30

Blackman 24H Sons

Lot 30

## FLEURY BLACKMAN 16L

SIRE

DOUBLE AA BLACKMAN 93C  
**FLEURY BLACKMAN 24H**  
FLEURY ANNIE K 27E

FLEURY BLACKMAN 76Y  
SASKALTA BLACKBIRD 41W  
FLEURY BARDOLIER 59B  
DOUBLE AA ANNIE K 53'06

DAM

FLEURY WINSTON 26F  
**FLEURY BLACKCAP 33H**  
FLEURY BLACKCAP 131F

ANGUS ACRES WINSTON 249B  
DOUBLE AA BLACKBIRD 903D  
RANCHERS CHOICE BARDOLINE 112C  
FLEURY BLACKCAP 12B

2336752 · FAR 16L · April 20 2023

EPDS

CED

BW

WW

YW

MILK

CEM

PERF

BW

Adj WW

Adj YW

-2

3

43

75

16

8

89

710

1239







Lot 31



FAR 13F Maternal Brother to Lot 31

Lot 31

## FLEURY BLACKMAN 17L

SIRE  
DOUBLE AA BLACKMAN 93C  
**FLEURY BLACKMAN 24H**  
FLEURY ANNIE K 27E

FLEURY BLACKMAN 76Y  
SASKALTA BLACKBIRD 41W  
FLEURY BARDOLIER 59B  
DOUBLE AA ANNIE K 53'06

DAM  
SEALIN CREEK NORTHERN 15A  
**FLEURY ANNIE K 147D**  
DOUBLE AA ANNIE K 658'06

ANGUS ACRES NORTHERN 92W  
SEALIN CREEK ROSEBUD 52T  
DOUBLE AA RITO 21'03  
DOUBLE AA ANNIE K 525'97

2336754 · FAR 17L · April 20 2023

EPDS	CED	BW	WW	YW	MILK	CEM	PERF	BW	Adj WW	Adj YW
-5	3.5	47	76	12	4	98	681	1203		

Lot 32

## FLEURY BLACKMAN 148L

SIRE  
DOUBLE AA BLACKMAN 93C  
**FLEURY BLACKMAN 24H**  
FLEURY ANNIE K 27E

FLEURY BLACKMAN 76Y  
SASKALTA BLACKBIRD 41W  
FLEURY BARDOLIER 59B  
DOUBLE AA ANNIE K 53'06

DAM  
FLEURY NORTHERN 17C  
**FLEURY ANNIE K 133E**  
FLEURY ANNIE K 40C

SEALIN CREEK NORTHERN 15A  
FIGURE 8 ANGUS JESTRESS 190Z  
FLEURY BLACKMAN 76Y  
FLEURY ANNIE K 109W

2336757 · FAR 148L · May 17 2023

EPDS	CED	BW	WW	YW	MILK	CEM	PERF	BW	Adj WW	Adj YW
-4	3	48	78	16	8	92	760	1249		

Lot 33

## FLEURY HEADLINER 30L

SIRE  
GLEN ISLAY HEADLINER 12E  
**FLEURY HEADLINER 56H**  
FLEURY ELENA 34Y

REMINGTON HEADS UP 44Y  
DOUBLE AA ANNIE K 203'06  
DOUBLE AA BARDOLIER 50'08  
FLEURY ANNIE K 22T

DAM  
DOUBLE AA BARDOLIER 47'06  
**FLEURY COREEN 53G**  
FLEURY COREEN 95D

DOUBLE AA BARDOLIER 322'03  
DOUBLE AA ANNIE K 289'02  
FLEURY TOM BOY 88B  
FIGURE 8 ANGUS COREEN 11X

2338022 · FAR 30L · April 22 2023

EPDS	CED	BW	WW	YW	MILK	CEM	PERF	BW	Adj WW	Adj YW
-4	3.6	32	56	14	8	93	668	1152		





Lot 34

Headliner 56H Sons



FAR 11E Maternal Brother to Lot 34



FAR 42F Maternal Brother to Lot 34



FAR 156H ¾ Brother to Lot 34

Lot 34

FLEURY HEADLINER 51L

DAM — SIRE

GLEN ISLAY HEADLINER 12E  
**FLEURY HEADLINER 56H**  
FLEURY ELENA 34Y

REMINGTON BLACK TOP ERIC 56Y  
**FLEURY BLACKCAP 167B**  
FLEURY BLACKCAP 39W

REMINGTON HEADS UP 44Y  
DOUBLE AA ANNIE K 203'06  
DOUBLE AA BARDOLINE 50'08  
FLEURY ANNIE K 22T

ANGUS ACRES ERIC 78U  
ANGUS ACRES TAYLOR MADE 42L  
DOUBLE AA BLACKMAN 414'06  
FLEURY BLACKCAP 53N

2337968 · FAR 51L · April 28 2023

EPDS	CED	BW	WW	YW	MILK	CEM	PERF	BW	Adj WW	Adj YW
	-2	2.8	30	43	19	8		90	734	1135






**Lot 35**

# **35 FLEURY HEADLINER 60L**

DAM — SIRE	GLEN ISLAY HEADLINER 12E <b>FLEURY HEADLINER 56H</b> FLEURY ELENA 34Y	REMINGTON HEADS UP 44Y DOUBLE AA ANNIE K 203'06 DOUBLE AA BARDOLENE 50'08 FLEURY ANNIE K 22T
	FLEURY BARDOLIER 59B <b>FLEURY BLACKCAP 58E</b> FLEURY BLACKCAP 98Z	RNRF BARDOLIER 805Y FLEURY RUBY 86Y DOUBLE AA BARDOLENE 285'06 FLEURY BLACKCAP 10U

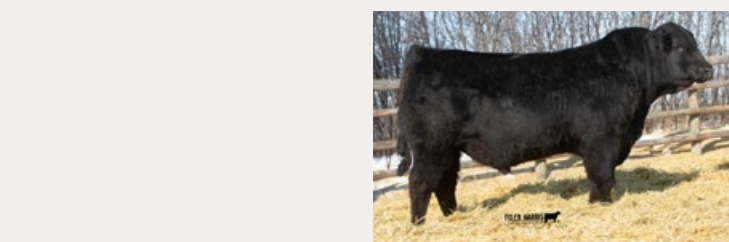
2337961 · FAR 60L · April 29 2023

EPDS	CED	BW	WW	YW	MILK	CEM	PERF	BW	Adj WW	Adj YW
	-4	4	43	72	20	8		91	790	1340

# **37 FLEURY HEADLINER 92L**

DAM — SIRE	GLEN ISLAY HEADLINER 12E <b>FLEURY HEADLINER 56H</b> FLEURY ELENA 34Y	REMINGTON HEADS UP 44Y DOUBLE AA ANNIE K 203'06 DOUBLE AA BARDOLENE 50'08 FLEURY ANNIE K 22T

2337953 · FAR 92L · May 06 2023



FAR 11F Maternal Brother to Lot 37


**Lot 36**

# **36 FLEURY HEADLINER 83L**

DAM — SIRE	GLEN ISLAY HEADLINER 12E <b>FLEURY HEADLINER 56H</b> FLEURY ELENA 34Y	REMINGTON HEADS UP 44Y DOUBLE AA ANNIE K 203'06 DOUBLE AA BARDOLENE 50'08 FLEURY ANNIE K 22T
	FLEURY ERIC 144F <b>FLEURY BLACKCAP 85H</b> FLEURY BLACKCAP 134E	Z-BAR ERIC 246A DOUBLE AA ANNIE K 90'06 FLEURY TOM BOY 13C FLEURY BLACKCAP 73A

2337965 · FAR 83L · May 04 2023

EPDS	CED	BW	WW	YW	MILK	CEM	PERF	BW	Adj WW	Adj YW
	-4	3.7	48	78	17	5		89	783	1310

DAM — SIRE	SEALIN CREEK ERIC 17Y <b>RANCHERS CHOICE PRINCESS 114D</b> RANCHERS CHOICE PRINCESS 517X	BLACKTOF ERIC 15S SEALIN CREEK ROSEBUD 54S SASKALTA BARDOLENE 97T SASKALTA FAME 488S

EPDS	CED	BW	WW	YW	MILK	CEM	PERF	BW	Adj WW	Adj YW
	1	2.3	37	63	14	9		83	719	1246



FAR 51J ¾ Brother to Lot 37







Lot 38

Headliner 12E Sons

FAR 96K Full Brother to Lot 38



**38**

**FLEURY HEADLINER 187L**

DAM — SIRE

REMINGTON HEADS UP 44Y  
**GLEN ISLAY HEADLINER 12E**  
 DOUBLE AA ANNIE K 203'06

RANCHERS CHOICE BARDOLINE 112C  
**FLEURY MISS FORTUNE 152F**  
 FLEURY MISS FORTUNE 10Y

ANGUS ACRES HEADS UP 137R  
 SEALIN CREEK ROSEBUD 111U  
 SASKALTA BARDOLINE 28M  
 DOUBLE AA ANNIE K 414'03  
 DOUBLE AA BARDOLINE 48Y  
 SASKALTA MS MORRISON 167U  
 FLEURY ROPER 15T  
 FLEURY MISS FORTUNE 24U

2338016 · FAR 187L · June 15 2023

EPDS	CED	BW	WW	YW	MILK	CEM	PERF	BW	Adj WW	Adj YW
	0	2.7	35	54	20	10		85	730	1202







Lot 39

Headliner 12E Sons

Tom Boy 61G Sons

Lot 39

## FLEURY HEADLINER 216L

SIRE

REMINGTON HEADS UP 44Y  
**GLEN ISLAY HEADLINER 12E**  
DOUBLE AA ANNIE K 203'06

ANGUS ACRES HEADS UP 137R  
SEALIN CREEK ROSEBUD 111U  
SASKALTA BARDOLENE 28M  
DOUBLE AA ANNIE K 414'03

DAM

DOUBLE AA BARDOLENE 48Y  
**RANCHERS CHOICE ANNIE K 80D**  
SASKALTA ANNIE K 308U

DOUBLE AA BARDOLENE 50'08  
DOUBLE AA ANNIE K 83'08  
FAR IRONMAN 1R  
SASKALTA EULA 77S

2361262 · FAR 216L · July 16 2023

EPDS

CED	BW	WW	YW	MILK
2	2.3	36	55	22

CEM

PERF	BW	Adj WW	Adj YW
10	86	813	1207

Lot 40

## FLEURY TOM BOY 10L

SIRE

RANCHERS CHOICE TOMMY 182B  
**FLEURY TOM BOY 61G**  
FLEURY ANNIE K 109D

SEALIN CREEK TOM BOY 14Y  
SASKALTA ANNIE K 413U  
FLEURY BARDOLENE 49X  
FLEURY ANNIE K 20A

DAM

RANCHERS CHOICE BARDOLIER 109X  
**RANCHERS CHOICE BLACKBIRD 149D**  
RANCHERS CHOICE BLACKBIRD 123Z

DOUBLE AA BARDOLIER 237'05  
SASKALTA BLACKBIRD 91S  
SASKALTA ESTON 105W  
SASKALTA BLACKBIRD 201R

2336809 · FAR 10L · April 17 2023

EPDS

CED	BW	WW	YW	MILK
1	1	37	53	17

CEM

PERF	BW	Adj WW	Adj YW
8	81	661	1111



FAR 25F Maternal Brother to Lot 39



FAR 56J Maternal Brother to Lot 39



FAR 115K Full Brother to Lot 39



FAR 65F Maternal Brother to Lot 40





Lot 42

**41**

**FLEURY TOM BOY 42L**

RANCHERS CHOICE TOMMY 182B  
**FLEURY TOM BOY 61G**  
 FLEURY ANNIE K 109D

RANCHERS CHOICE BARDOLIER 109X  
**RANCHERS CHOICE PRINCESS 100D**  
 RANCHERS CHOICE PRINCESS 112X

SEALIN CREEK TOM BOY 14Y  
 SASKALTA ANNIE K 413U  
 FLEURY BARDOLINE 49X  
 FLEURY ANNIE K 20A

DOUBLE AA BARDOLIER 237'05  
 SASKALTA BLACKBIRD 91S  
 F V 308M KING 445T  
 SASKALTA PRINCESS 93S

2336807 · FAR 42L · April 25 2023

EPDS	CED	BW	WW	YW	MILK	CEM	PERF	BW	Adj WW	Adj YW
	-3	4	38	70	15	6		95	659	1198

**42**

**FLEURY TOM BOY 46L**

RANCHERS CHOICE TOMMY 182B  
**FLEURY TOM BOY 61G**  
 FLEURY ANNIE K 109D

ANGUS ACRES WINSTON 249B  
**FLEURY LADY LASS 18F**  
 FLEURY LADY LASS 7D

SEALIN CREEK TOM BOY 14Y  
 SASKALTA ANNIE K 413U  
 FLEURY BARDOLINE 49X  
 FLEURY ANNIE K 20A

ANGUS ACRES WINSTON 198X  
 ANGUS ACRES LADY ALLEGRA 58U  
 RANCHERS CHOICE BLACKMAN 141A  
 FLEURY LADY LASS 110X

2335385 · FAR 46L · April 27 2023

EPDS	CED	BW	WW	YW	MILK	CEM	PERF	BW	Adj WW	Adj YW
	-4	4.1	40	64	18	6		90	660	1124

**43**

**FLEURY TOM BOY 96L**

RANCHERS CHOICE TOMMY 182B  
**FLEURY TOM BOY 61G**  
 FLEURY ANNIE K 109D

SEALIN CREEK TOM BOY 14Y  
 SASKALTA ANNIE K 413U  
 FLEURY BARDOLINE 49X  
 FLEURY ANNIE K 20A

ANGUS ACRES WINSTON 249B  
**FLEURY COREEN 20F**  
 FLEURY COREEN 95D

ANGUS ACRES WINSTON 198X  
 ANGUS ACRES LADY ALLEGRA 58U  
 FLEURY TOM BOY 88B  
 FIGURE 8 ANGUS COREEN 11X

2335386 · FAR 96L · May 07 2023

EPDS	CED	BW	WW	YW	MILK	CEM	PERF	BW	Adj WW	Adj YW
	-4	3.8	47	78	20	4		88	723	1265



FAR 40J Maternal Brother to Lot 42

FAR 119K Maternal Brother to Lot 42

FAR 124K Maternal Brother to Lot 43

FAR 119H Maternal Brother to Lot 43







Tom Boy 18H Sons

Lot 44

FLEURY TOM BOY 109L

44

SIRE	RANCHERS CHOICE TOMMY 182B	DAM	FLEURY ERIC 144F					Z-BAR ERIC 246A					
	<b>FLEURY TOM BOY 18H</b>		<b>FLEURY ANNIE K 114H</b>					DOUBLE AA ANNIE K 90'06					
	FLEURY ANNIE K 66D		DOUBLE AA ANNIE K 84E					FLEURY NORTHERN 17C DOUBLE AA ANNIE K 31C					
2337979 · FAR 109L · May 09 2023			EPDS	CED	BW	WW	YW	MILK	CEM	PERF	BW	Adj WW	Adj YW
				-5	4.2	44	75	16	4		90	710	1252

45

FLEURY TOM BOY 122L

SIRE	RANCHERS CHOICE TOMMY 182B <b>FLEURY TOM BOY 18H</b> FLEURY ANNIE K 66D	DAM	SEALIN CREEK TOM BOY 14Y SASKALTA ANNIE K 413U FLEURY BARDOLENE 49X FLEURY ANNIE K 89X					SIRE	RANCHERS CHOICE TOMMY 182B <b>FLEURY TOM BOY 18H</b> FLEURY ANNIE K 66D	DAM	SEALIN CREEK TOM BOY 14Y SASKALTA ANNIE K 413U FLEURY BARDOLENE 49X FLEURY ANNIE K 89X												
	DOUBLE AA BLACKMAN 93C <b>FLEURY ERICA 71G</b> FLEURY ERICA 44D					FLEURY BLACKMAN 76Y SASKALTA BLACKBIRD 41W FLEURY TOM BOY 88B FIGURE 8 ANGUS ERICA 952X					ZANIABAR HEADS UP 35X <b>FLEURY LASS 124A</b> FLEURY LASS 46U					REMINGTON HEADS UP 25S ZANIABAR PRIDE LADY 78N DOUBLE AA BLACKMAN 414'06 SASKALTA LASS 264M							
2338017 · FAR 122L · May 10 2023												2338027 · FAR 176L · May 27 2023											

46

FLEURY TOM BOY 176L

SIRE	RANCHERS CHOICE TOMMY 182B	DAM	SEALIN CREEK TOM BOY 14Y					
	<b>FLEURY TOM BOY 18H</b>		SASKALTA ANNIE K 413U					
	FLEURY ANNIE K 66D		FLEURY BARDOLINE 49X					
			FLEURY ANNIE K 89X					
	ZANIABAR HEADS UP 35X		REMINGTON HEADS UP 25S					
	<b>FLEURY LASS 124A</b>		ZANIABAR PRIDE LADY 78N					
	FLEURY LASS 46U		DOUBLE AA BLACKMAN 414'06					
			SASKALTA LASS 264M					
2338027 · FAR 176L · May 27 2023								

## Jumbo 118G Sons



Lot 47

## FLEURY JUMBO 47L

SIRE

ANGUS ACRES JUMBO 7B  
**FLEURY JUMBO 118G**  
FLEURY BLACKCAP 11C

REMINGTON JUMBO 517Y  
ANGUS ACRES ROYAL VELVET 99R  
REMINGTON BLACK TOP ERIC 56Y  
FLEURY BLACKCAP 40X

DAM

GLEN ISLAY HEADLINER 12E  
**FLEURY ELENA 109H**  
FLEURY ELENA 40Z

REMINGTON HEADS UP 44Y  
DOUBLE AA ANNIE K 203'06  
DOUBLE AA BARDOLINE 50'08  
FLEURY ELENA 9U

2335396 · FAR 47L · April 27 2023

EPDS	CED	BW	WW	YW	MILK	CEM	PERF	BW	Adj WW	Adj YW
	0	1.8	35	54	18	7		86	694	1172

## 48 Suitable FOR HEIFERS

## FLEURY JUMBO 70L

SIRE  
DAM

ANGUS ACRES JUMBO 7B  
**FLEURY JUMBO 118G**  
FLEURY BLACKCAP 11C

GLEN ISLAY HEADLINER 12E  
**FLEURY ELENA 120H**  
FLEURY ELENA 2E

REMINGTON JUMBO 517Y  
ANGUS ACRES ROYAL VELVET 99R  
REMINGTON BLACK TOP ERIC 56Y  
FLEURY BLACKCAP 40X

REMINGTON HEADS UP 44Y  
DOUBLE AA ANNIE K 203'06  
RANCHERS CHOICE BLACKMAN 141A  
FLEURY ELENA 9U

2335397 · FAR 70L · May 01 2023

EPDS	CED	BW	WW	YW	MILK	CEM	PERF	BW	Adj WW	Adj YW
	0	1.5	41	65	18	7		83	714	1229

## 49

## FLEURY JUMBO 107L

SIRE  
DAM

ANGUS ACRES JUMBO 7B  
**FLEURY JUMBO 118G**  
FLEURY BLACKCAP 11C

GLEN ISLAY HEADLINER 12E  
**FLEURY ANNIE K 190H**  
FLEURY ANNIE K 75E

REMINGTON JUMBO 517Y  
ANGUS ACRES ROYAL VELVET 99R  
REMINGTON BLACK TOP ERIC 56Y  
FLEURY BLACKCAP 40X

REMINGTON HEADS UP 44Y  
DOUBLE AA ANNIE K 203'06  
FLEURY BARDOLINE 49X  
DOUBLE AA ANNIE K 324'06

2335399 · FAR 107L · May 09 2023

EPDS	CED	BW	WW	YW	MILK	CEM	PERF	BW	Adj WW	Adj YW
	-3	3.1	35	62	19	6		88	661	1246





Lot **50****FLEURY JUMBO 143L**

DAM — SIRE

ANGUS ACRES JUMBO 7B  
**FLEURY JUMBO 118G**  
 FLEURY BLACKCAP 11C

SASKALTA ESTON 134W  
**FLEURY ANNIE K 85Y**  
 DOUBLE AA ANNIE K 393'06

REMINGTON JUMBO 517Y  
 ANGUS ACRES ROYAL VELVET 99R  
 REMINGTON BLACK TOP ERIC 56Y  
 FLEURY BLACKCAP 40X

SASKALTA ESTON 388P  
 SASKALTA ERICA 337N  
 PEAK DOT NEW TREND 42M  
 DOUBLE AA ANNIE K 684'99

2336749 · FAR 143L · May 16 2023

EPDS	CED	BW	WW	YW	MILK	CEM	PERF	BW	Adj WW	Adj YW
	-1	1.4	47	71	21	6		89	861	1310



FAR 122E Maternal Brother to Lot 50

Lot **51****FLEURY JUMBO 67L**

DAM — SIRE

REMINGTON JUMBO 517Y  
**ANGUS ACRES JUMBO 7B**  
 ANGUS ACRES ROYAL VELVET 99R

FLEURY BARDOLENE 82G  
**FLEURY BLACKBIRD 80J**  
 FLEURY BLACKBIRD 158G

HAPPYVALE BLACK JUMBO 1B  
 ANGUS ACRES DARLING 10L  
 ANGUS ACRES NORTHERN 185N  
 ANGUS ACRES ROYAL VELVET 99N

FLEURY BARDOLENE 87E  
 FLEURY LASS 90E  
 ANGUS ACRES JUMBO 7B  
 DOUBLE AA BLACKBIRD 903D

2335587 · FAR 67L · May 01 2023

EPDS	CED	BW	WW	YW	MILK	CEM	PERF	BW	Adj WW	Adj YW
	-13	5.6	45	71	17	-4		91	760	1240



FAR 23G Maternal Brother to Lot 50

Lot **52**Suitable  
FOR HEIFERS**FLEURY JUMBO 85L**

DAM — SIRE

REMINGTON JUMBO 517Y  
**ANGUS ACRES JUMBO 7B**  
 ANGUS ACRES ROYAL VELVET 99R

FLEURY BANDOLIER 61D  
**FLEURY MISS FORTUNE 21J**  
 FLEURY MISS FORTUNE 152F

HAPPYVALE BLACK JUMBO 1B  
 ANGUS ACRES DARLING 10L  
 ANGUS ACRES NORTHERN 185N  
 ANGUS ACRES ROYAL VELVET 99N

FLEURY BANDOLIER 27A  
 DOUBLE AA ANNIE K 224'05  
 RANCHERS CHOICE BARDOLENE 112C  
 FLEURY MISS FORTUNE 10Y

2336811 · FAR 85L · May 04 2023

EPDS	CED	BW	WW	YW	MILK	CEM	PERF	BW	Adj WW	Adj YW
	-1	2.5	37	61	18	5		84	704	1199



FAR 15H ¾ Brother to Lot 50



## FLEURY JUMBO 134L

53

SIRE

REMINGTON JUMBO 517Y  
**ANGUS ACRES JUMBO 7B**  
ANGUS ACRES ROYAL VELVET 99R

HAPPYVALE BLACK JUMBO 1B  
ANGUS ACRES DARLING 10L  
ANGUS ACRES NORTHERN 185N  
ANGUS ACRES ROYAL VELVET 99N

DAM

FLEURY BANDOLIER 61D  
**FLEURY COREEN 92J**  
FLEURY COREEN 152E

FLEURY BANDOLIER 27A  
DOUBLE AA ANNIE K 224'05  
RANCHERS CHOICE BARDOLINE 112C  
FIGURE 8 ANGUS COREEN 11X

2336816 · FAR 134L · May 14 2023 · Twin

EPDS

CED	BW	WW	YW	MILK	CEM	PERF	BW	Adj WW	Adj YW
0	1.4	35	54	18	4		60	683	1159

## FLEURY JUMBO 139L

54

SIRE

REMINGTON JUMBO 517Y  
**ANGUS ACRES JUMBO 7B**  
ANGUS ACRES ROYAL VELVET 99R

HAPPYVALE BLACK JUMBO 1B  
ANGUS ACRES DARLING 10L  
ANGUS ACRES NORTHERN 185N  
ANGUS ACRES ROYAL VELVET 99N

DAM

FLEURY BANDOLIER 61D  
**FLEURY COUNTESS 47J**  
FIGURE 8 ANGUS COUNTESS 78Y

FLEURY BANDOLIER 27A  
DOUBLE AA ANNIE K 224'05  
FIGURE 8 ANGUS TOM BOY 217N  
FIGURE 8 ANGUS COUNTESS 78R

2336814 · FAR 139L · May 15 2023

EPDS

CED	BW	WW	YW	MILK	CEM	PERF	BW	Adj WW	Adj YW
-8	2.9	39	63	16	-1		91	732	1235

# Internet Bidding Available

**D|L|M|S**  
*www.dlms.ca*  
Direct Livestock Marketing Systems

For more information call:

Mark Shologan 780-699-5082 or Purebred Team 780-991-3025







Lot 55

Jumbo 7B Sons

Lot 55

## FLEURY JUMBO 154L

SIRE	REMINGTON JUMBO 517Y	HAPPYVALE BLACK JUMBO 1B	FLEURY BLACKMAN 42F	RANCHERS CHOICE BLACKMAN 176B						
	ANGUS ACRES JUMBO 7B				ANGUS ACRES DARLING 10L	FLEURY ELENA 34J	RANCHERS CHOICE BLACKPAC 167B			
	ANGUS ACRES ROYAL VELVET 99R				ANGUS ACRES NORTHERN 185N	FLEURY ELENA 171F	RANCHERS CHOICE TOMMY 182B			
		ANGUS ACRES ROYAL VELVET 99N		FLEURY ELENA 34Y						
2336760 · FAR 154L · May 18 2023										
EPDS	CED	BW	WW	YW	MILK	CEM	PERF	BW	Adj WW	Adj YW
	-4	3	36	60	15	4		89	721	1251



Fleury Cattle Company was proud to purchase

## *Carter Carroll's 4-H steer*

this past summer at the Melfort 4H Regional Sale. Carter did an exceptional job showing Spike, who was a home-raised steer.



*Neil Charteris's steers topping the market last fall in Saskatoon.*

The Charteris family have been long time customers at Fleury Cattle Company.

Saskatoon Livestock Sales Ltd.





# REFERENCE HERDSIRES



RS		FLEURY BANDOLIER 61D									
DAM	SIRE	JOHNSTON BANDOLIER 170F									
		<b>FLEURY BANDOLIER 27A</b>									
		DOUBLE AA ELENA 38'02									
		DOUBLE AA BARDOLENE 321'02									
DAM	SIRE	<b>DOUBLE AA ANNIE K 224'05</b>									
		DOUBLE AA ANNIE K 548'03									
		BROOKSIDE BANDOLIER 12U									
		JOHNSTON MAX TRADITION 370A									
DAM	SIRE	DOUBLE AA BARDOLENE 22'98									
		DOUBLE AA ELENA 8'95									
		DOUBLE AA BARDOLIER 13'98									
		DOUBLE AA HENRIETTA 666'99									
DAM	SIRE	DOUBLE AA BLACKMAN 252'96									
		DOUBLE AA ANNIE K 280'96									

1945491 · FAR 61D · April 24 2016

EPDS	CED	BW	WW	YW	MILK	CEM	PERF	BW	Adj WW	Adj YW
	2	2.5	39	66	15	8		91	649	1201

The Bandolier line of cattle has been a part of our breeding program for many years. This line continues to excel in length, performance, and overall depth of body. The daughters are easy fleshing, functional cattle with longevity. Fleury Bandolier 61D was the high-selling leadoff bull in our 2018 bull sale, selling to Bronyx Angus. We were fortunate to have had the opportunity to bring Fleury Bandolier 61D back into our program. FAR 61D is a long-bodied, big-footed, stylish herd bull that has played a major role in our breeding program. FAR 61D's pedigree combines the Bardolene, Blackman, Bardolier, and Bandolier lines of cattle; these four lines have played crucial roles in building our cowherd to what it is today. His dam, Double AA Annie K 224'05, was a deep bodied, good-footed, powerful cow offering the predictability of the Annie K cow. If you are looking to strengthen foot quality, add longevity, and produce some top females we strongly recommend looking at a Fleury Bandolier 61D son.

RS		FLEURY BARDOLENE 54G									
DAM	SIRE	DOUBLE AA BARDOLENE 50'08									
		<b>DOUBLE AA BARDOLENE 48Y</b>									
		DOUBLE AA ANNIE K 83'08									
		DOUBLE AA BARDOLENE 47'04									
DAM	SIRE	DOUBLE AA ANNIE K 280'96									
		DOUBLE AA BARDOLIER 47'06									
		DOUBLE AA ANNIE K 26'06									
		DOUBLE AA BARDOLIER 237'05									
DAM	SIRE	SASKALTA BLACKBIRD 915									
		DOUBLE AA BARDOLENE 54'06									
		SASKALTA ANNE K 227R									
		RANCHERS CHOICE BARDOLIER 109X									
DAM	SIRE	<b>DOUBLE AA ANNIE K 904D</b>									
		RANCHERS CHOICE ANNIE K 99Y									

2125129 · FAR 54G · April 28 2019

EPDS	CED	BW	WW	YW	MILK	CEM	PERF	BW	Adj WW	Adj YW
	-5	4.4	42	66	11	1		85	703	1154

Fleury Bardolene 54G is a herd bull that is appreciated for his overall correctness, style, thickness, and muscle. He is moderately framed and extremely easy fleshing. The Bardolene line has been the corner post of our breeding program for many years. His dam, Double AA Annie K 904D, is a powerful cow with a big foot and plenty of thickness. Fleury Bardolene 54G will offer moderate birth weight while still excelling in performance.

# REFERENCE HERDSIRES



DAM — SIRE

**RS**

DOUBLE AA BARDOLENE 150A  
**FLEURY BARDOLENE 114E**  
FLEURY ANNIE K 74X

FLEURY WINSTON 10Z  
**RANCHERS CHOICE DUCHESS 214D**  
RANCHERS CHOICE DUCHESS 223B

DOUBLE AA BARDOLENE 50'08  
DOUBLE AA ANNIE K 83'08  
DOUBLE AA BLACKMAN 414'06  
DOUBLE AA ANNIE K 213'06

ANGUS ACRES WINSTON 249B  
FLEURY BLACKCAP 40X  
SEALIN CREEK TOM BOY 14Y  
RANCHERS CHOICE DUCHESS 132X

2179503 · FAR 41H · April 24 2020

EPDS	CED	BW	WW	YW	MILK	CEM	PERF	BW	Adj WW	Adj YW
	-3	3.6	43	69	19	8		91	794	1278

Fleury Bardolene 41H is a high-performing, long-bodied bull who will enhance frame score in your cattle. His dam, Ranchers Choice Duchess 214D, is feminine, carries a gorgeous udder, and has lots of depth. She was a favourite of many visitors at the North Saskatchewan Angus Tour this past summer. FAR 41H's progeny will be sure give you that added performance while producing top replacement females.

DAM — SIRE

**RS**

FLEURY BLACKMAN 76W  
**RANCHERS CHOICE BLACKMAN 176B**  
SASKALTA ANNIE K 238U

REMINGTON BLACK TOP ERIC 56Y  
**FLEURY BLACKCAP 167B**  
FLEURY BLACKCAP 39W

DOUBLE AA BLACKMAN 548'05  
DOUBLE AA PRINCESS 58'05  
SASKALTA BAROS 228N  
SASKALTA ANNE K 183R

ANGUS ACRES ERIC 78U  
ANGUS ACRES TAYLOR MADE 42L  
DOUBLE AA BLACKMAN 414'06  
FLEURY BLACKCAP 53N

2064317 · FAR 42F · April 29 2018

EPDS	CED	BW	WW	YW	MILK	CEM	PERF	BW	Adj WW	Adj YW
	-4	2.7	35	56	14	11		89	787	1282

Fleury Blackman 42F is known for his overall style, muscle, and thickness. We admire the heel and big foot under this bull. He was an absolute standout as a calf and has continued to impress us as he has developed into a mature bull. His dam, FAR 167B, was a top producing cow in our breeding program. Fleury Blackcap 167B was known for her femininity, balance, thickness, and style. The Blackcap line of cattle was the first cow family established at Fleury Cattle Company. This cow family is extremely maternal and are big producing cattle. The daughters off of FAR 42F are deep bodied, feminine, and have that stylish Blackcap presence. We have the utmost confidence in Fleury Blackman 42F as he continues to move the Blackman line of cattle forward.

34

FLEURY CATTLE COMPANY

2025 TWO YEAR OLD BULL SALE



# REFERENCE HERDSIRES



**RS**

## GLEN ISLAY HEADLINER 12E

DAIRY — SIRE

ANGUS ACRES HEADS UP 137R  
**REMINGTON HEADS UP 44Y**  
SEALIN CREEK ROSEBUD 111U

SASKALTA BARDOLENE 28M  
**DOUBLE AA ANNIE K 203'06**  
DOUBLE AA ANNIE K 414'03

ANGUS ACRES HEADS UP 165L  
LAZY J BARDELLA LASS 37G  
ANGUS ACRES HEADS UP 188L  
ADELPHI ROSEBUD W 124K

SASKALTA BARDOLENE 182H  
SASKALTA EDNA 780G  
DOUBLE AA BARDOLENE 22'98  
DOUBLE AA ANNIE K 27'00

1963703 · JPC 12E · January 23 2017

EPDS	CED	BW	WW	YW	MILK	CEM	PERF	BW	Adj WW	Adj YW
	-2	2.1	33	49	23	10		80		

Glen Islay Headliner 12E has bred extremely well for our program. Sons have sold throughout Canada and into the US and we couldn't be happier with this sire's progeny. JPC 12E's daughters are in full production and have proven themselves as hard-working females. Glen Islay Headliner 12E will add muscle and depth. His progeny are extremely easy fleshing and are quiet natured. JPC 12E has offered our customers a complete outcross pedigree on the top-side, allowing us to line breed the maternal side back into our program. JPC 12E's dam, Double AA Annie K 203'06, was a prolific cow within the Angus breed, proving herself as a top producer by raising many herd bulls and replacement females throughout Canada.

**RS**

## FLEURY TOM BOY 61G

DAIRY — SIRE

SEALIN CREEK TOM BOY 14Y  
**RANCHERS CHOICE TOMMY 182B**  
SASKALTA ANNIE K 413U

FLEURY BARDOLENE 49X  
**FLEURY ANNIE K 109D**  
FLEURY ANNIE K 20A

ANGUS ACRES TOM BOY 64D  
SEALIN CREEK ELINE 64N  
DOUBLE AA BARDOLENE 422'03  
SASKALTA ANE K 708G

DOUBLE AA BARDOLENE 50'08  
DOUBLE AA ANNIE K 53'06  
JOHNSTON BANDOLIER 170F  
FLEURY ANNIE K 74X

2122226 · FAR 61G · April 28 2019

EPDS	CED	BW	WW	YW	MILK	CEM	PERF	BW	Adj WW	Adj YW
	-5	4.3	53	85	17	4		95	841	1334

Fleury Tom Boy 61G excelled in natural growth. Many visitors appreciated him for his frame, length of body, and foot size. His sire, Ranchers Choice Tom Boy 182B, was a bull that has done great things at Fleury Cattle Company. FAR 61G's dam, Fleury Annie K 109D, was a powerful, long bodied female who carried a picturesque udder. Fleury Tom Boy 61G's offspring will excel in length, performance, and frame score.



# REFERENCE HERDSIRES



**RS**

## FLEURY TOM BOY 18H

DAM — SIRE

SEALIN CREEK TOM BOY 14Y  
**RANCHERS CHOICE TOMMY 182B**  
SASKALTA ANNIE K 413U

FLEURY BARDOLINE 49X  
**FLEURY ANNIE K 66D**  
FLEURY ANNIE K 89X

ANGUS ACRES TOM BOY 64D  
SEALIN CREEK ELINE 64N  
DOUBLE AA BARDOLINE 422'03  
SASKALTA ANE K 708G

DOUBLE AA BARDOLINE 50'08  
DOUBLE AA ANNIE K 53'06  
MILL IRON BLACKJACK 727'07  
DOUBLE AA ANNIE K 324'06

2179122 · FAR 18H · April 19 2020

EPDS	CED	BW	WW	YW	MILK	CEM	PERF	BW	Adj WW	Adj YW
	1	2.8	30	51	17	7		84	767	1218

Fleury Tom Boy 18H was retained to continue the legacy of Ranchers Choice Tommy 182B. BTR 182B was a herd bull that bred very well for us. Many of his sons topped previous sales and we have many of his daughters working in our cowherd today. Fleury Tom Boy 18H is a smooth-made, long-bodied bull, with lots of muscle. His dam, Fleury Annie K 66D, has been a highly productive cow, producing many sale-topping sons. FAR 18H's pedigree is stacked to produce some respectable females. He combines the famous Annie K cow family with the proven Tom Boy line of cattle.

**RS**

## FLEURY JUMBO 118G

DAM — SIRE

REMINGTON JUMBO 517Y  
**ANGUS ACRES JUMBO 7B**  
ANGUS ACRES ROYAL VELVET 99R

REMINGTON BLACK TOP ERIC 56Y  
**FLEURY BLACKCAP 11C**  
FLEURY BLACKCAP 40X

HAPPYVALE BLACK JUMBO 1B  
ANGUS ACRES DARLING 10L  
ANGUS ACRES NORTHERN 185N  
ANGUS ACRES ROYAL VELVET 99N

ANGUS ACRES ERIC 78U  
ANGUS ACRES TAYLOR MADE 42L  
DOUBLE AA BLACKMAN 414'06  
FLEURY BLACKCAP 53N

2122222 · FAR 118G · May 13 2019

EPDS	CED	BW	WW	YW	MILK	CEM	PERF	BW	Adj WW	Adj YW
	-1	1.4	46	75	19	5		82	764	1302

Fleury Jumbo 118G promotes length, performance, and will add that extra frame into his progeny. The Jumbo line has proven itself to be very hardy, aggressive breeding cattle. The Jumbo daughters are feminine, smooth, and consistently have a beautiful udder. FAR 118G's dam, Fleury Blackcap 11C, was a top producing model Angus female who has left quite a legacy. If you are looking to add frame score, length of body, and strong maternal traits, we highly recommend looking at a Fleury Jumbo 118G son.





# REFERENCE HERDSIRES



**RS**

## FLEURY BLACKMAN 24H

DAM — SIRE

FLEURY BLACKMAN 76Y  
**DOUBLE AA BLACKMAN 93C**  
SASKALTA BLACKBIRD 41W

FLEURY BARDOLIER 59B  
**FLEURY ANNIE K 27E**  
DOUBLE AA ANNIE K 53'06

DOUBLE AA BLACKMAN 414'06  
DOUBLE AA ANNIE K 261'06  
SASKALTA ESTON 388P  
SASKALTA BLACKBIRD 119L

RNRF BARDOLIER 805Y  
FLEURY RUBY 86Y  
SASKALTA BARDOLINE 28M  
DOUBLE AA ANNIE K 302'02

2179457 · FAR 24H · April 20 2020

EPDS	CED	BW	WW	YW	MILK	CEM	PERF	BW	Adj WW	Adj YW
	-2	2.5	55	85	18	8		84	860	1298

Fleury Blackman 24H was appreciated for his thickness, big foot, easy fleshing ability, and athleticism. His dam, Fleury Annie K 27E, is a descendent of a special female, Double AA Annie K 53S. RCE 53S has registered 15 natural progeny through the CAA, including multiple sons selling to seed stock operations throughout Canada. FAR 24H's dam, Fleury Annie K 27E, is a spitting image of her mother and has produced two sons retained in our breeding program. Unfortunately, due to injury there will be a small group of sons offered by Fleury Blackman 24H. We are sure you'll be impressed with his progeny.

**RS**

## FLEURY HEADLINER 56H

DAM — SIRE

REMINGTON HEADS UP 44Y  
**GLEN ISLAY HEADLINER 12E**  
DOUBLE AA ANNIE K 203'06

DOUBLE AA BARDOLINE 50'08  
**FLEURY ELENA 34Y**  
FLEURY ANNIE K 22T

ANGUS ACRES HEADS UP 137R  
SEALIN CREEK ROSEBUD 111U  
SASKALTA BARDOLINE 28M  
DOUBLE AA ANNIE K 414'03

DOUBLE AA BARDOLINE 47'04  
DOUBLE AA ANNIE K 280'96  
JOHNSTON BANDOLIER 170F  
DOUBLE AA ELENA 38'02

2179674 · FAR 56H · April 27 2020

EPDS	CED	BW	WW	YW	MILK	CEM	PERF	BW	Adj WW	Adj YW
	1	2.5	33	55	16	9		93	761	1223

Fleury Headliner 56H was selected out of our 2022 group of two-year-olds to carry on our Headliner line of cattle. FAR 56H excelled in length, muscle, and had the hind quarter and style that we look for in a herd bull. His dam, Fleury Elena 34Y, has produced multiple herd bulls for our program. Unfortunately, due to injury FAR 56H's time was cut short with us but we are extremely happy with his progeny. If you are looking to add length while not sacrificing depth, I would highly recommend a FAR 56H son.



# REFERENCE HERDSIRES

**RS**

## ANGUS ACRES JUMBO 7B

DAM — SIRE

HAPPYVALE BLACK JUMBO 1B  
**REMINGTON JUMBO 517Y**  
ANGUS ACRES DARLING 10L

ANGUS ACRES NORTHERN 185N  
**ANGUS ACRES ROYAL VELVET 99R**  
ANGUS ACRES ROYAL VELVET 99N

HAPPYVALE BLACK BARD 34X  
BLACKCAP BOTHA  
ANGUS ACRES TAYLOR MADE 53E  
LDR DARLING 10Z

RIVERCREST GREAT NORTHERN 35G  
ANGUS ACRES TIP TOP 85L  
ANGUS ACRES BANDY 96X  
ANGUS ACRES ROYAL VELVET 79L

1784983 · MKY 7B · March 31 2014

EPDS	CED	BW	WW	YW	MILK	CEM	PERF	BW	Adj WW	Adj YW
	-3	1.7	35	56	19	1		70	709	1075

Angus Acres Jumbo 7B was a bull that grabbed my attention when visiting Angus Acres in the summer of 2018. His overall smoothness, athleticism, balance, and eye appeal was greatly admired. Angus Acres Jumbo 7B's dam, Angus Acres Royal Velvet 99N, was a well-proven elite dam for Dwight and Jo-Anne Mackay. MKY 99N is backed by one of the cornerstone cow families at Angus Acres, the Royal Velvet cow family. We have many daughters in production sired by MKY 7B. These hard working cows are extremely feminine and moderate in type. Angus Acres Jumbo 7B has certainly left his mark on our program. If you are looking for maternal outcross genetics with longevity we highly recommend looking at the Jumbo 7B progeny.



**RS**

## FLEURY NORTHERN 12D

DAM — SIRE

ANGUS ACRES NORTHERN 92W  
**SEALIN CREEK NORTHERN 15A**  
SEALIN CREEK ROSEBUD 52T

DOUBLE AA BARDOLENE 50'08  
**FLEURY ELENA 34Y**  
FLEURY ANNIE K 22T

ANGUS ACRES NORTHERN 114S  
ANGUS ACRES LADY LAWN 92T  
ANGUS ACRES HEADS UP 188L  
ADELPHI ROSEBUD 54K

DOUBLE AA BARDOLENE 47'04  
DOUBLE AA ANNIE K 280'96  
JOHNSTON BANDOLIER 170F  
DOUBLE AA ELENA 38'02

1945479 · FAR 12D · April 10 2016

EPDS	CED	BW	WW	YW	MILK	CEM	PERF	BW	Adj WW	Adj YW
	0	1.8	32	58	8	7		87	572	1084

We have always appreciated the Northern line of cattle for their overall smoothness, length of body, and style. The Northern cattle have strong maternal traits, offering tremendous udders and longevity. After watching the Northern daughters mature into our cowherd we thought it was appropriate to inject this line back into our program. Fleury Northern 12D was sold in our 2018 bull sale to Don and Jeff Gingrich of Simpson, SK. Don and Jeff have been great customers over the years and we are fortunate that they allowed us to bring Fleury Northern 12D back into our program. FAR 12D's dam, Fleury Elena 34Y, was a moderate, deep bodied female with an exceptional udder. Not only is this female the right kind but she is backed by two very influential bulls, Double AA Bardolene 50'08 and Johnston Bandolier 170F. The Elena cow family has been a prominent cow family for us for many years.





# GOLD RUSH

## Future Herdsire



Dam

**FS**

### GLEN ISLAY GOLD RUSH 7K

DAM — SIRE

DOUBLE AA BARDOLIER 47'06  
**DOUBLE AA BARDOLIER 119'08**  
DOUBLE AA ANNIE K 203'06

REMINGTON HEADS UP 44Y  
**GLEN ISLAY PRIDE 2E**  
GLEN ISLAY ESTON PRIDE 13X

DOUBLE AA BARDOLIER 322'03  
DOUBLE AA ANNIE K 289'02  
SASKALTA BARDOLINE 28M  
DOUBLE AA ANNIE K 414'03

ANGUS ACRES HEADS UP 137R  
SEALIN CREEK ROSEBUD 111U  
ABANGOMERE ESTON  
GLEN ISLAY PRIDE 1M

2262283 · JPC 7K · January 11 2022

EPDS	CED	BW	WW	YW	MILK	CEM	PERF	BW	Adj WW	Adj YW
	-9	4.2	35	62	13	4		95	755	1266

We patiently await Glen Islay Gold Rush 7K's first set of calves to hit the ground this spring. He comes to us from Don Currie of world-renowned Glen Islay Angus, whose lifetime devotion to the Angus breed is admirable. We feel Gold Rush is a great fit for our breeding program, combining all the traits we like to see in a herd bull. JPC 7K is extremely thick, stylish, heavy-muscled, and has a lot of quarter. He was the highest performing bull in Glen Islay's yearling pen, earning the heaviest weaning and yearling weights. Gold Rush's sire, Double AA Bardolier 119U, is a bull that has made his mark on the Angus breed. He has bred extremely well for Glen Islay, producing many top bulls and females marketed throughout North America. JPC's dam, Glen Islay Pride 2E, is a long, smooth-bodied, feminine female who has a beautiful udder. Glen Islay Pride 2E created quite the interest when she sold for \$26,000 through the 2023 Blue Water Angus sale. This past summer Gold Rush was displayed with a select group of females when hosting the North Saskatchewan Angus tour and was admired by many cattle producers. We are incredibly excited for the future of Gold Rush and what he has to offer our program.

**Fleury Cattle Company**  
*was pleased to be a part of the*  
**2024 Saskatchewan North Central Angus Tour this past summer.**  
**Thanks to everyone who took the time to come visit our operation.**









Matthew Fleury  
Box 177 Aberdeen  
Saskatchewan S0K 0A0



■ LOT 17 ■



■ LOT 30 ■



■ LOT 34 ■