

FLEURY

Cattle Co

THE SOURCE FOR
CANADIAN ANGUS
GENETICS

2 YEAR OLD **BLACK**  **ANGUS** BULL SALE

APRIL 15, 2016 ▯ 3:00 PM ▯ SASKATOON LIVESTOCK SALES

WELCOME

APRIL 15, 2016 3:00 PM SASKATOON LIVESTOCK SALES

2 YEAR OLD **BLACK** **ANGUS** BULL SALE

The Source for Canadian Angus Genetics



DESIGNED BY **topstock**

2

FLEURY CATTLE COMPANY BLACK ANGUS BULL SALE

SASKATOON LIVESTOCK SALES APRIL 15



FLEURY CATTLE COMPANY

Matthew Fleury

Phone 306 291 3960

Office 306 253 4242

Fax 306 253 4242

📍 Box 177 Aberdeen
Saskatchewan S0K 0A0

✉️ fleurycattleco@hotmail.com

💻 fleurycattlecompany.com

WELCOME TO FLEURY CATTLE COMPANY'S TWO YEAR OLD BLACK ANGUS BULL SALE.

First of all I would like to thank the Wheeler family for working together over the years in producing the very successful Cattlemen's Bull Sale. The Wheelers are great people, outstanding cattlemen, and raise excellent purebred Red Angus cattle. Our relationship was not just a partnership but a true friendship. With the expansion of both operations, it was beneficial for both breeding programs to conduct their own bull sales. Thank you to the Wheelers and good luck in the future.

I am very excited about the 2016 edition of Fleury Cattle Company's Two Year Old Black Angus Bull Sale. This year's sale will showcase our entire breeding program, selling sons off our Canadian bred herd sires. Straight Canadian genetics continue to be our focus, allowing our customers to source predictable and consistent out-cross genetics that are rare to North America and the world. These superior genetics promote added length, natural muscle, and more frame score than breed average. We believe our genetics are designed to satisfy the needs of the feedlot operators, packers, and retailers. Today, fat steers and heifers need enough frame score, natural muscle, fleshing ability, and yield to satisfy the entire beef industry. We believe our bulls will provide our customers with the out-cross genetics to raise cattle that finish off at an ideal live and carcass weight. At the end of the day,

performance drives profits for everyone involved in the entire beef industry food chain.

Our bull sale will run in conjunction with the Saskatoon Livestock Sales Express Replacement Heifer Sale. Over 600 top quality replacement heifers will be sold at 12:00 noon just before our sale. These heifers will represent all of the industry's popular breeds and have been consigned by some of the finest commercial cattle breeders within our province. Be sure to come early to take in the SLS Express Replacement Heifer Sale and make a full afternoon of enjoying watching top quality replacement heifers and ranch-ready Black Angus Two Year Old bulls go through the SLS sale ring.

I know Fleury Cattle Company's set of two year old Black Angus bulls will certainly impress you. We invite you out to the ranch at any time to view the bulls and our cow herd. If there is anything I can do to help you with your purchases prior to sale or sale day, please do not hesitate to contact me.

I look forward to seeing you at this year's edition of Fleury Cattle Company's Two Year Old Black Angus Bull Sale.

Sincerely

Matthew Fleury



SALE INFORMATION

Selling 40 Black Angus Two Year Old Bulls

APRIL 15, 2016 @ 3:00 PM @ SASKATOON LIVESTOCK SALES

SASKATOON LIVESTOCK SALES LTD. IS LOCATED 10 KM WEST OF SASKATOON ON HIGHWAY #14

**12:00
NOON**

Saskatoon Livestock Sales
Express Replacement Heifer Sale
(600 Replacement Heifers will sell)

**3:00
PM**

Fleury Cattle Company
Two Year Old Black Angus
Bull Sale

Please join us following the Bull Sale for a complimentary BBQ steak supper and social



SALES STAFF

Col Steve Dorran, Auctioneer	403 226 2985
	403 540 9498
Craig Flewelling, Ring Service	403 556 0515
Nate Marin, Ring Service	306 869 7130

Harvey Welter	306 227 8684
Alvin Busby	306 221 0905
Pat Tellier	306 291 2720
Ryan Hurlburt	306 292 9812
Michael Fleury	306 222 9526
Bill Dillabaugh	306 965 2554

HURLBURT LIVESTOCK

Kirk Hurlburt	306 222 8210
---------------	--------------

LIVESTOCK INSURANCE LT AGENCIES

Larry Toner	306 932 4866 or 306 834 7652
-------------	------------------------------

STANDING BEHIND WHAT WE SELL All bulls in the sale are semen tested, scrotal measured and vet inspected by a licensed veterinarian. All buyers will be provided with a semen evaluation certificate.

SIGHT UNSEEN PURCHASE PLAN If you are unable to attend the sale, you can have Matt handle your purchase. Nobody knows the bulls better than Matt and he can assist you in the selection of your bull. Please contact him by phone at 306 291 3960.

TRUCKING Free delivery to Saskatchewan, Manitoba and Alberta. For purchases going beyond, we will help accommodate delivery as economically as we can. *All bulls will be delivered to your farm or central points within 48 hours of the sale.*



TERMS AND CONDITIONS

TERMS The terms of the sale are cash or cheque, payable at par at the sale location. The right of property shall not pass until after settlement has been made; no invoicing on buyers in attendance unless previous arrangements have been made. Every animal sells to the highest bidder and, in cases of disputes, the auctioneer's decision will be final.

Announcements from the auction block will take precedence over the printed matter in the catalogue. Current exchange rates will be announced on sale day. All monies are in Canadian funds.

CERTIFICATE OF REGISTRATION Each animal will carry papers issued by the Canadian Angus Association. A certificate of registry duly transferred will be furnished to the buyer for each animal after payment has been made.

HEALTH All animals in the sale have met all necessary health requirements.

GUARANTEE Each animal becomes the purchaser's risk

immediately after the animal is sold. All animals in this sale will be sold under the terms and guarantees set forth by the Canadian Angus Association with regard to health, freedom from defects and from both reproductive and specific genetic unsoundness.

LIABILITIES All persons attend the sale at their own risk. The seller, facility owner, auctioneer and sale staff assume no liability, legal or otherwise, for any accidents that occur.

INSURANCE Agents will be in attendance to insure your purchases. We strongly recommend that insurance is purchased for full value.

ACCOMMODATIONS Best Western Plus Blairmore, 306 Shillington Crescent, Saskatoon. Phone 306 242 2299 and ask for the SLS rate.

THE RIGHT TO COLLECT SEMEN Fleury Cattle Company reserve the right to collect semen for within herd use on any of the bulls sold at their expense and the buyer's convenience.

BULL DEVELOPMENT

I believe bull development starts from the day they are born. At Fleury Cattle Company, calving starts April 20th; the calves are born on grass in their natural environment. Canadian winters get very cold and spring calving eliminates any stress that the cow and calf may experience by calving in the cold. Calving on grass is virtually stress free for mama and baby.

The calves are raised on the cow for six months with no creep feed. Calves are weaned in November and in the first year the yearlings are put on a TMR ration not exceeding 1% of body weight of grain per day, maintaining a 2.5 lb daily gain. Feeding the bulls out on a light ration promotes growth development; the bulls are not pushed. The first week in May they are then turned out on seeded forage pastures where these bulls grow frame and are developed in a natural environment. While on grass the bulls have a whole oat creep to enhance development. The bulls walk for their feed while grazing all summer. This grazing process develops their athletic ability, frames the bulls out, and develops their joints and muscle at an acceptable pace.

We bring these bulls home from grass in early fall and

they are put on a TMR ration designed for a 3-3.5 lbs daily gain. These bulls are developed with longevity in mind. On sale day these bulls will have reached 75% of their mature weight as a two year old. Running two year old bulls gives a better idea of what that bull is going to mature into. Two year old bulls are capable of covering more cows and require less development. We believe a two year old bull is past the calf stage, knows he is a breeding bull, and is ready to go out and breed cows.



As agriculture evolves we notice farms and ranches expanding. With this growth, operations need to be more efficient and economical to sustain a profitable operation. Due to ranchers expanding their cow herds, cattle are run in larger groups and the demand for two year old bulls has never been greater.

Fleury Cattle Company only sells two year old bulls and every bull goes through our Bull Sale. No yearlings or two year olds are sold off the ranch. We believe in developing our bulls for our customer. We are proud of the fact that all bulls sale day are ready to breed and cover more cows and also have a better chance of survival when turned in to multiple bull sire pastures.

FLEURY CATTLE COMPANY EPDS

A large group of Fleury Cattle Company's cowherd originated from Double AA Angus in Coleville, SK. This particular cowherd was known for breeding the famous "Annie K" line of cattle. The Double AA Angus cowherd was not involved in the Canadian Angus Performance program; therefore EPD's were not documented. Our current EPD data has not accumulated enough accuracy to become a true reflection of our breeding program. We continue to strive forward with these Canadian genetics, and our EPD data continues to build each year.

IDENTIFYING CANADIAN PEDIGREED ANGUS CATTLE

-  Animals with a standard three generation pedigree made up of all Canadian genetics will receive a designation of "Canadian" and a maple leaf will adorn the registration certificate.
-  Animals with a five generation pedigree made up of all Canadian genetics will receive a designation of "Straight Canadian" and a Canadian flag will adorn the registration certificate.



*Saskatoon Livestock Sales
Ltd. is located 10 km west of
Saskatoon on Highway #14*

SASKATOON LIVESTOCK SALES EXPRESS REPLACEMENT HEIFER SALE

FRIDAY, APRIL 15, 2016 STARTING AT 12:00 NOON



— Selling —
600
REDS, BLACKS, & TANS

**TOP QUALITY REPLACEMENT HEIFERS SELECTED FROM SOME OF
THE FINEST COMMERCIAL CATTLE HERDS IN SASKATCHEWAN.**

All heifers have been vet inspected, palpated, and guaranteed open. All heifers in the sale offering have been vaccinated with the Express Verified vaccination program.

Fleury Cattle Company Black Angus Bull Sale will follow the SLS Express Replacement Heifer Sale, starting at 3pm.



REFERENCE SIRES

DOUBLE AA BARDOLENE 50'08

RCE 50U * BORN 08/03/2008 * REG #1464835



DOUBLE AA BARDOLENE 8'98

dam **DOUBLE AA BARDOLENE 47'04**

DOUBLE AA ANNIE K 289'02

ANGUS ACRES WINSTON 249B

dam **DOUBLE AA ANNIE K 280'96**

DOUBLE AA ANNIE K 218'92

DOUBLE AA BARDOLENE 30'94
JOHNSTONE 9X TRADITION 370D

DOUBLE AA RITO 206'97

DOUBLE AA ANNIE K 534'92

ANGUS ACRES WINSTON 198X

ANGUS ACRES LADY ALLEGRA 58U

BARDOLENE OLE SASKALTA 56Z

DOUBLE AA ANNIE K 65'90

EPDS

CE	BW	WW	YW	MM	TM
11.0	3.1	30	58	15	30

PERFORMANCE

BW	AWW	AYW
86	-	-

Here is a straight Canadian-bred bull that has heavily influenced Fleury Cattle Company's program. 50'08 carries excellent bone, lots of mass and muscle, and has a picture perfect foot. 50'08 is a bull that has been admired by many commercial bull buyers, breeders, and international guests. His progeny are very stylish and he continuously stamps his calves. Sons, daughters, and semen have been sold throughout Canada and the USA and have been a big influence on these programs. The Annie K cow family are highly regarded within the Angus industry, excelling in numerous purebred operations; 50'08's pedigree has some of the most influential Annie K cows that have ever existed. 50'08's dam is a well-recognized cow in the Angus business. This cow has produced many successful herd bulls for Double AA Angus and is the grandmother to the well-known Double AA Old Post bull. We really feel we have something special and unique. We are excited about his progeny and feel they are the type of cattle that the industry demands.

DOUBLE AA BLACKMAN 414'06

RCE 414S * BORN 15/03/2006 * REG #1329448



DOUBLE AA BLACKMAN 252'96

dam **DOUBLE AA BLACKMAN 292'01**

DOUBLE AA ANNIE K 603'92

DOUBLE AA RETO 554'93

dam **DOUBLE AA ANNIE K 27'00**

DOUBLE AA ANNIE K 72'90

DOUBLE AA BLACKMAN 24'93

DOUBLE AA ANNIE K 620'91

DOUBLE AA BARDOLIER 15'90

DOUBLE AA ANNIE K 541'89

JOHNSTONE 2100 BARDOLENE 554Y

DOUBLE AA ANNIE K 504'88

BARDOLENE OF PEAK DOT 204R

DOUBLE AA ANNIE K 532'86

EPDS

CE	BW	WW	YW	MM	TM
-2.0	5.5	27	56	12	26

PERFORMANCE

BW	AWW	AYW
80	708	1411

This strong herd bull was discovered in the spring of 2007. Double AA Blackman 414'06 was our pick of the Dillabough's 2007 yearling bull pen. We bought half interest in this bull at the Rancher's Choice Bull Sale in Medicine Hat. This bull has sure proven himself, producing many females retained in our herd. The Blackman 414'06 sons have worked well for the commercial cattlemen, leaving calves that have extra growth and performance. This bull has an 80 lb birth weight, 708 lb weaning weight, and a 1411 lb yearling weight. The numbers are right, his daughters are producers, and his sons are simply good. He has great ultrasound data with AAA marbling, 13.35"² REA. We are proud to have this bull working in our herd; his progeny will be sure to add that extra *performance* to your program.

RNRF BARDOLIER 805Y

RNRF 805Y * BORN 30/01/2011 * REG #1640163



DOUBLE AA BARDOLINE 322'03

Don **DOUBLE AA BARDOLINE 47'06**

DOUBLE AA ANNIE K 289'02

DOUBLE AA RITO 21'03

Don **DOUBLE AA ANNIE K 813'06**

DOUBLE AA ANNIE K 806'00

DOULBE AA BARDOLIER 550'00

DOUBLE AA ANNIE K 674'99

DOUBLE AA RITO 206'97

DOUBLE AA ANNIE K 534'92

DOUBLE AA RITO 206'97

DOUBLE AA ANNIE K 275'97

DOUBLE AA WINSTON 623'96

DOUBLE AA ANNIE K 806'00

EPDS						PERFORMANCE		
CE	BW	WW	YW	MM	TM	BW	AWW	AYW
8.0	0.7	43	80	11	33	85	724	1246

RNRF Bardolier 805Y is an extremely long bodied, heavy boned bull who is out of a top cow, Double AA Annie K 813'06. This bull was discovered at the Flicek's bull sale in 2012 and was a standout. RNRF Bardolier 805Y is sired by the well-known Double AA Bardolier 47'06, a sire that has had a large impact on many breeding programs. We feel RNRF 805Y is the type of bull the industry requires and are extremely excited about what he has to offer our breeding program. RNRF Bardolier 805Y has bred very well for our program, with sons and daughters rising to the top of their pens. RNRF Bardolier 805Y is co-owned with Saskalta Farms and Double AA Angus.

SASKALTA BANDOLIER 40W

BTR 40W * BORN 21/01/2009 * REG #1517526



JOHNSTON BANDOLIER 170F

Don **FLEURY ROCK SOLID 63S**

DOUBLE AA ELENA 38'02

SASKALTA WINSTON 157F

Don **SASKALTA BLACKBIRD 103L**

SASKALTA BLACKBIRD 692F

BROOKSIDE BANDOLIER 12U

JOHNSTONE MAX TRADITION 370A

DOUBLE AA BARDOLINE 22'98

DOUBLE AA ELENA 8'95

ANGUS ACRES WINSTON 249B

ELBA OLE SASKALTA 157B

JOHNSTON 2100 TRADITION 485Y

BLACKBIRD OLE SASKALTA 6Z

EPDS						PERFORMANCE		
CE	BW	WW	YW	MM	TM	BW	AWW	AYW
1.0	3.5	39	63	13	33	92	785	1244

Saskalta Bandolier 40W was selected out of the Saskalta Farms' program in the spring of 2010. This bull was selected because of his out-cross pedigree, big hip, and overall natural thickness. Saskalta Bandolier 40W will be used on our Double AA Blackman 414'06 and Double AA Bardolene 50'08 daughters, as I feel these types of cattle will compliment each other. 40W is an extremely easy fleshing bull with a picture perfect foot and great disposition. The sons on offer sired by Saskalta Bandolier 40W are very easy fleshing, stout, and carry lots of lower quarter and scrotal. Saskalta Bandolier 40W is co-owned with Saskalta Farms and Double AA Angus.

REFERENCE SIRES

LOOKOUT PACESETTER 258M

LSF 258M * BORN 17/02/2002 * REG #1110236

PARAMOUNT AMBUSH 2172

sire WILLABAR AMBUSH 45G

WILLABAR COUNTESS 90A

ED RENE EILENMERE 45P

dam GRASSY LANES MILLY 29U

GRASSY LANES MILLY 37S

BANDOLIER ESTON DURNES 42B

EWS MISS BURGESS 1720

WILLABAR JIMBO 70Y

WILLABAR COUNTESS 13X

SIR WMS WETONKA 5979

ED RENE BLACK ANGEL 3

ED RENE BAR LAD 10M

MILLY OF ARJAY 11M

EPDS

CE	BW	WW	YW	MM	TM
3.0	1.0	29	37	15	20

PERFORMANCE

BW	AWW	AYW
87	730	1135

Lookout Pacesetter 258M is a well-known bull who has contributed many tremendous females to various programs. In 2012 we selected LSF 258M semen to use on all of our replacement females and a few select top cows in our breeding program. This bull's offspring are moderately framed and extremely easy fleshing. Our 2013 heifer calves were bred to LSF 258M because we were impressed with the cross on our 2012 heifer pen. In 2014 we took Fleury Pacesetter 9A and Fleury Pacesetter 36A and exposed these two Lookout Pacesetter 258M sons on our heifers. Lookout Pacesetter 258M calves will add that moderate, easy fleshing ability to your program and are recommended on larger framed cattle.



Fleury Pacesetter 38B, a feature Pacesetter 258M son that sells as Lot 34

SEALIN CREEK TOM BOY 14Y

PAK 14Y * BORN 29/01/2011 * REG #1607415



ANGUS ACRES TOM BOY 196Z

sire ANGUS ACRES TOM BOY 64D

ANGUS ACRES VELVET 65U

ANGUS ACRES HEADS UP 188L

dam SEALIN CREEK ELINE 64N

SEALIN CREEK ELINE 90L

TOMIL VON ERIC GR 39W

ANGUS ACRES MATILDA 70W

ANGUS ACRES TEXAS TEA 19M

ANGUS ACRES VELVET 65P

ANGUS ACRES HEADS UP 124G

ANGUS ACRES KARAMA 98H

ANGUS ACRES TOM BOY 23D

ADELPHI ELINE 61A

EPDS

CE	BW	WW	YW	MM	TM
-3.0	3.2	35	54	0	18

PERFORMANCE

BW	AWW	AYW
91	-	-

In the spring of 2012 we toured the Sealin Creek cow herd from Monte Lake, BC. While touring their herd we were impressed by the udders, feet, and the breeding program behind the cow herd. When Sealin Creek Tom Boy 14Y was spotted we were immediately sold on the bull. Sealin Creek Eline 64N, PAK 14Y's dam, is a top producing cow with lots of length of body, power, and a gorgeous udder. Sealin Creek Tom Boy 14Y was the champion Angus bull at the Williams Lake Bull sale and caught the attention of many cattlemen. He left his mark on the Williams Lake Bull Sale by setting sale records, which generated a lot of interest. PAK 14Y comes from a program where structurally sound, good-footed cattle are emphasized; these cattle are expected to cover a lot of distance grazing the mountain pastures. This bull's progeny are moderate, easy fleshing cattle and his females are tremendous. The PAK 14Y calves are very correct, easy fleshing, and full of style. Sealin Creek Tom Boy 14Y is co-owned with Saskalta Farms.

FLEURY BARDOLENE 49X

FAR 49X * BORN 26/02/2010 * REG #1590110



DOUBLE AA BARDOLENE 47'04

son **DOUBLE AA BARDOLENE 50'08**

DOUBLE AA ANNIE K 280'96

SASKALTA BARDOLENE 28M

dam **DOUBLE AA ANNIE K 53'06**

DOUBLE AA ANNIE K 302'02

DOUBLE AA BARDOLENE 8'98

DOUBLE AA ANNIE K 289'02

ANGUS ACRES WINSTON 249B

DOUBLE AA ANNIE K 218'92

SASKALTA BARDOLENE 182H

SASKALTA EDNA 780G

DOUBLE AA BARDOLENE 578'98

DOUBLE AA ANNIE K 29'99

EPDS						PERFORMANCE		
CE	BW	WW	YW	MM	TM	BW	AWW	AYW
4.0	3.8	41	69	15	36	88	776	1338

Fleury Bardolene 49X was a standout at a young age, with a lot of length of body, top, and a big foot. We are excited about what this bull has to offer. This bull was shown as a calf and was the 2010 Jackpot Champion Bull and a member of the champion pen at the Saskatoon Fall Fair pen show. Fleury Bardolene 49X's dam, Double AA Annie K 53'06, is one of the top producing females in our program and has a tremendous udder. We feel this bull will be the new version of Double AA Bardolene 50'08 in our breeding program. Our 2017 Two Year Old Bull Sale will be the first year we have Bardolene 49X sired bulls on offer. FAR 49X is line bred Bardolene on both sides of his pedigree, doubling up the strong line of Bardolene cattle. Fleury Bardolene 49X combines a great mother cow, Double AA Annie K 53'06, with the well known Double AA Bardolene 50'08; this creates some predictable genetics that we are excited to be offering in the future.

FLEURY BLACKMAN 76Y

FAR 76Y * BORN 05/03/2011 * REG #1626815



DOUBLE AA BLACKMAN 292'01

son **DOUBLE AA BLACKMAN 414'06**

DOUBLE AA ANNIE K 27'00

DOUBLE AA BARDOLIER 322'03

dam **DOUBLE AA ANNIE K 261'06**

DOUBLE AA ANNIE K 209'98

DOUBLE AA BLACKMAN 252'96

DOUBLE AA ANNIE K 603'92

DOUBLE AA RETO 554'93

DOUBLE AA ANNIE K 72'90

DOUBLE AA BARDOLIER 550'00

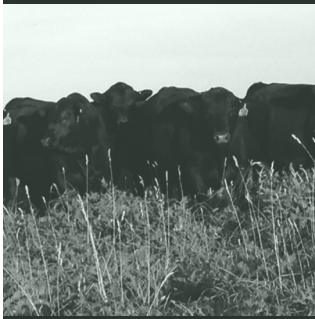
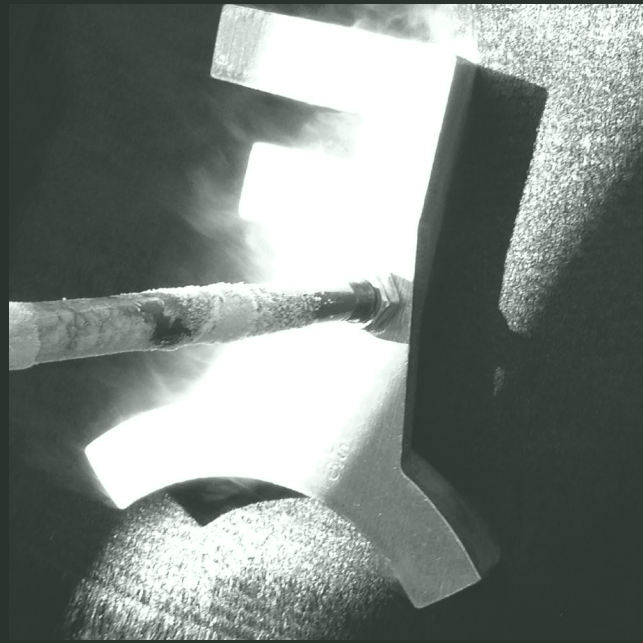
DOUBLE AA ANNIE K 674'99

DOUBLE AA RETO 554'93

DOUBLE AA ANNIE K 71'90

EPDS						PERFORMANCE		
CE	BW	WW	YW	MM	TM	BW	AWW	AYW
2.0	3.5	32	64	10	26	84	728	1268

Fleury Blackman 76Y is a powerful bull offering lots of depth, width, and length of body. This powerful Double AA Blackman 414'06 son displays many of the traits of his sire. In 2012 FAR 76Y was retained to use in our breeding program and our 2017 Two Year Old Bull Sale will be the first year we have Blackman 76Y sired bulls on offer. Fleury Blackman 76Y's dam, Double AA Annie K 261'06, was a powerful cow who brought in a top calf every year. Double AA Annie K 261'06 has produced numerous females retained in our herd today. Double AA Blackman 414'06, FAR 76Y's sire, was a **performance** bull that sired some of our top **performance** bulls sold to date. We are extremely excited about Fleury Blackman 76Y and feel he is a great bull to carry on the impressive line of Blackman cattle.





PICTURED ABOVE

Lot 1 FLEURY BARDOLIER 59B

FAR 59B * BORN 26/04/2015 * REG #1818070

DOUBLE AA BARDOLIER 47'06

sire RNRF BARDOLIER 805Y

DOUBLE AA ANNIE K 813'06

DOUBLE AA BLACKMAN 414'06

dam FLEURY RUBY 86Y

CC MISS 170 RUBY 3P

DOUBLE AA BARDOLIER 322'03 1162365

DOUBLE AA ANNIE K 289'02 1103193

DOUBLE AA RITO 21'03 1162263

DOUBLE AA ANNIE K 806'00 1014640

DOUBLE AA BLACKMAN 292'01 1051241

DOUBLE AA ANNIE K 27'00 1004130

JOHNSTON BANDOLIER 170F 865056

LJB RUBY 3J 993021

EPDS					
CE	BW	WW	YW	MM	TM
1.0	3.5	39	77	10	30

PERFORMANCE		
BW	AWW	AYW
95	735	1339

Lot 2 FLEURY BARDOLIER 107B

FAR 107B * BORN 05/05/2014 * REG #1818103

DOUBLE AA BARDOLIER 47'06

sire RNRF BARDOLIER 805Y

DOUBLE AA ANNIE K 813'06

DOUBLE AA BARDOLENE 50'08

dam FLEURY ANNIE K 61X

DOUBLE AA ANNIE K 261'06

DOUBLE AA BARDOLIER 322'03

DOUBLE AA ANNIE K 289'02

DOUBLE AA RITO 21'03

DOUBLE AA ANNIE K 806'00

DOUBLE AA BARDOLENE 47'04

DOUBLE AA ANNIE K 280'96

DOUBLE AA BARDOLIER 322'03

DOUBLE AA ANNIE K 209'98

EPDS					
CE	BW	WW	YW	MM	TM
4.0	3.2	42	78	12	33

PERFORMANCE		
BW	AWW	AYW
92	785	1344

BARDOLIER SONS

Lot 3

FLEURY BARDOLIER 87B

FAR 87B * BORN 01/05/2014 * REG #1818091

RNRF BARDOLIER 805Y
sire RNRF BARDOLIER 805Y
 DOUBLE AA ANNIE K 813'06
 SASKALTA ESTON 134W
dam FLEURY BLACKLASS 74Y
 FLEURY BLACKLASS 35U
 DOUBLE AA BARDOLIER 322'03
 DOUBLE AA ANNIE K 289'02
 DOUBLE AA RITO 21'03
 DOUBLE AA ANNIE K 806'00
 SASKALTA ESTON 388P
 SASKALTA ERICA 337N
 DOUBLE AA BLACKMAN 414'06
 DOUBLE D BLACKLASS 6M

EPDS

CE	BW	WW	YW	MM	TM
4.0	2.2	38	64	14	33

PERFORMANCE

BW	AWW	AYW
88	744	1236



Lot 4

FLEURY BARDOLIER 110B

FAR 110B * BORN 05/05/2014 * REG #1818102

DOUBLE AA BARDOLIER 47'06
sire RNRF BARDOLIER 805Y
 DOUBLE AA ANNIE K 813'06
 DOUBLE AA BLACKMAN 414'06
dam FLEURY ROSEBUD 78X
 CC ROSEBUD 13K
 DOUBLE AA BARDOLIER 322'03
 DOUBLE AA ANNIE K 289'02
 DOUBLE AA RITO 21'03
 DOUBLE AA ANNIE K 806'00
 DOUBLE AA BLACKMAN 292'01
 DOUBLE AA ANNIE K 27'00
 SASKALTA RITO 133H
 CC ROSEBUD 1H

EPDS

CE	BW	WW	YW	MM	TM
3.0	2.8	38	73	7	26

PERFORMANCE

BW	AWW	AYW
95	734	1286





Tyler Harris

PICTURED ABOVE

Lot 5 FLEURY BARDOLIER 112B

FAR 112B * BORN 06/05/2014 * REG #1818105

DOUBLE AA BARDOLIER 47'06

sire RNRF BARDOLIER 805Y

DOUBLE AA ANNIE K 813'06

FLEURY ROPER 15T

dam FLEURY BLACKCAP 1X

FLEURY BLACKCAP 10U

DOUBLE AA BARDOLIER 322'03

DOUBLE AA ANNIE K 289'02

DOUBLE AA RITO 21'03

DOUBLE AA ANNIE K 806'00

BLACK WHEEL KRYPTONITE 41P

FLEURY BLACKCAP 53N

DOUBLE AA BLACKMAN 414'06

DESSA BLACKCAP 33M

EPDS					
CE	BW	WW	YW	MM	TM
4.0	2.4	40	70	14	34

PERFORMANCE		
BW	AWW	AYW
87	744	1213

Lot 6 FLEURY BARDOLIER 127B

FAR 127B * BORN 09/05/2014 * REG #1818153

DOUBLE AA BARDOLIER 47'06

sire RNRF BARDOLIER 805Y

DOUBLE AA ANNIE K 813'06

JOHNSTON BANDOLIER 170F

dam CC MISS 170 RUBY 3P

LJB RUBY 3J

DOUBLE AA BARDOLIER 322'03

DOUBLE AA ANNIE K 289'02

DOUBLE AA RITO 21'03

DOUBLE AA ANNIE K 806'00

BROOKSIDE BANDOLIER 12U

JOHNSTON MAX TRADITION 370A

WILBAR FORTUNE 126G

MARTENS RUBY

EPDS					
CE	BW	WW	YW	MM	TM
4.0	2.0	36	66	8	26

PERFORMANCE		
BW	AWW	AYW
95	720	1202

BARDOLIER & BLACKMAN SONS



*Tyler Harris
Photography.com*

PICTURED ABOVE

Lot 7 FLEURY BARDOLIER 152B

FAR 152B * BORN 16/05/2014 * REG #1818133

DOUBLE AA BARDOLIER 47'06
sire RNR F BARDOLIER 805Y
 DOUBLE AA ANNIE K 813'06
 DOUBLE AA BLACKMAN 414'06
dam FLEURY LASS 46U
 SASKALTA LASS 264M

DOUBLE AA BARDOLIER 322'03
 DOUBLE AA ANNIE K 289'02
 DOUBLE AA RITO 21'03
 DOUBLE AA ANNIE K 806'00
 DOUBLE AA BLACKMAN 292'01
 DOUBLE AA ANNIE K 27'00
 SASKALTA BARDOLINE 182H
 SASKALTA LASS 755J

EPDS					
CE	BW	WW	YW	MM	TM
8.0	1.0	32	62	11	27

PERFORMANCE		
BW	AWW	AYW
83	674	1163

Lot 8 FLEURY BLACKMAN 53B

FAR 53B * BORN 25/04/2014 * REG #1818064

DOUBLE AA BLACKMAN 292'01
sire DOUBLE AA BLACKMAN 414'06
 DOUBLE AA ANNIE K 27'00
 JL FINAL ANSWER 07030
dam FLEURY ANNIE K 8W
 DOUBLE AA ANNIE K 580'06

DOUBLE AA BLACKMAN 252'96
 DOUBLE AA ANNIE K 603'92
 DOUBLE AA RETO 554'93
 DOUBLE AA ANNIE K 72'90
 S A V FINAL ANSWER 0035
 MFA LOLA 118R
 PEAK DOT NEW TREND 42M
 DOUBLE AA ANNIE K 533'94

EPDS					
CE	BW	WW	YW	MM	TM
2.0	3.2	31	69	17	33

PERFORMANCE		
BW	AWW	AYW
96	725	1302



PICTURED ABOVE

Lot 9 FLEURY BLACKMAN 70B

FAR 70B * BORN 28/04/2014 * REG #1818081

DOUBLE AA BLACKMAN 292'01
sire **DOUBLE AA BLACKMAN 414'06**
 DOUBLE AA ANNIE K 27'00
 FLEURY ROPER 15T
dam **FLEURY BONNIE 93Y**
 FLEURY BONNIE 6T

DOUBLE AA BLACKMAN 252'96
 DOUBLE AA ANNIE K 603'92
 DOUBLE AA RETO 554'93
 DOUBLE AA ANNIE K 72'90
 BLACK WHEEL KRYPTONITE 41P
 FLEURY BLACKCAP 53N
 EASTONDALE ALLIANCE 57'04
 HALCYON BONNIE ERICA 968

EPDS					
CE	BW	WW	YW	MM	TM
3.0	3.1	26	55	14	27

PERFORMANCE		
BW	AWW	AYW
80	657	1199

Lot 10 FLEURY BLACKMAN 118B

FAR 118B * BORN 08/05/2014 * REG #1818113

DOUBLE AA BLACKMAN 292'01
sire **DOUBLE AA BLACKMAN 414'06**
 DOUBLE AA ANNIE K 27'00
 BLACK WHEEL HICK HOP 49R
dam **FLEURY ANNIE K 182W**
 DOUBLE AA ANNIE K 261'06

DOUBLE AA BLACKMAN 252'96
 DOUBLE AA ANNIE K 603'92
 DOUBLE AA RETO 554'93
 DOUBLE AA ANNIE K 72'90
 ROTH REGULATOR 0405
 FCR LUCILLE 40K
 DOUBLE AA BARDOLIER 322'03
 DOUBLE AA ANNIE K 209'98

EPDS					
CE	BW	WW	YW	MM	TM
-1.0	5.0	25	59	10	23

PERFORMANCE		
BW	AWW	AYW
91	618	1179

BLACKMAN SONS



PICTURED ABOVE

Lot 11 FLEURY BLACKMAN 82B

FAR 82B * BORN 01/05/2014 * REG #1818093

DOUBLE AA BLACKMAN 292'01
sire DOUBLE AA BLACKMAN 414'06
 DOUBLE AA ANNIE K 27'00
 BLACK WHEEL KRYPTONITE 41P
dam FLEURY LADY LASS 56S
 SASKALTA LASS 264M

DOUBLE AA BLACKMAN 252'96
 DOUBLE AA ANNIE K 603'92
 DOUBLE AA RETO 554'93
 DOUBLE AA ANNIE K 72'90
 F A R KRUGERRAND 410H
 CRESCENT CREEK JESTRESS 128F
 SASKALTA BARDOLINE 182H
 SASKALTA LASS 755J

EPDS					
CE	BW	WW	YW	MM	TM
1.0	3.5	31	62	13	29

PERFORMANCE		
BW	AWW	AYW
90	694	1206

Lot 12 FLEURY BLACKMAN 157B

FAR 157B * BORN 23/05/2014 * REG #1818137

DOUBLE AA BLACKMAN 292'01
sire DOUBLE AA BLACKMAN 414'06
 DOUBLE AA ANNIE K 27'00
 BLACK WHEEL KRYPTONITE 41P
dam FLEURY MISS PRINCESS 51S
 FLEURY PRINCESS 2P

DOUBLE AA BLACKMAN 252'96
 DOUBLE AA ANNIE K 603'92
 DOUBLE AA RETO 554'93
 DOUBLE AA ANNIE K 72'90
 F A R KRUGERRAND 410H
 CRESCENT CREEK JESTRESS 128F
 DOUBLE AA RITO 324'02
 SASKALTA PRINCESS 213M

EPDS					
CE	BW	WW	YW	MM	TM
2.0	3.3	38	74	13	32

PERFORMANCE		
BW	AWW	AYW
90	782	1393



PICTURED ABOVE

Lot 13 FLEURY BANDOLIER 31B

FAR 31B * BORN 21/04/2014 * REG #1818048

FLEURY ROCK SOLID 63S

sire SASKALTA BANDOLIER 40W

SASKALTA BLACKBIRD 103L

DOUBLE AA BARDOLENE 50'08

dam FLEURY ANNIE K 43X

DOUBLE AA ANNIE K 471'06

JOHNSTON BANDOLIER 170F

DOUBLE AA ELENA 38'02

SASKALTA WINSTON 157F

SASKALTA BLACKBIRD 692F

DOUBLE AA BARDOLENE 47'04

DOUBLE AA ANNIE K 280'96

DOUBLE AA BARDOLENE 35'04

DOUBLE AA ANNIE K 638'04

EPDS					
CE	BW	WW	YW	MM	TM
3.0	3.6	28	46	13	27

PERFORMANCE		
BW	AWW	AYW
89	628	1108

Lot 14 FLEURY BANDOLIER 45B

FAR 45B * BORN 24/04/2014 * REG #1818059

FLEURY ROCK SOLID 63S

sire SASKALTA BANDOLIER 40W

SASKALTA BLACKBIRD 103L

DOUBLE AA BLACKMAN 414'06

dam FLEURY BLACKCAP 40X

FLEURY BLACKCAP 53N

JOHNSTON BANDOLIER 170F

DOUBLE AA ELENA 38'02

SASKALTA WINSTON 157F

SASKALTA BLACKBIRD 692F

DOUBLE AA BLACKMAN 292'01

DOUBLE AA ANNIE K 27'00

F V L463 SCOTCHCAP 134L

SASKALTA BLACKCAP 048K

EPDS					
CE	BW	WW	YW	MM	TM
-1.0	4.2	31	58	15	31

PERFORMANCE		
BW	AWW	AYW
95	702	1235

BANDOLIER SONS



PICTURED ABOVE

Lot 15 FLEURY BANDOLIER 50B

FAR 50B * BORN 25/04/2014 * REG #1818066

FLEURY ROCK SOLID 63S

sire SASKALTA BANDOLIER 40W

SASKALTA BLACKBIRD 103L

DOUBLE AA BARDOLIER 322'03

dam DOUBLE AA ANNIE K 460'06

DOUBLE AA ANNIE K 568'00

JOHNSTON BANDOLIER 170F

DOUBLE AA ELENA 38'02

SASKALTA WINSTON 157F

SASKALTA BLACKBIRD 692F

DOUBLE AA BARDOLIER 550'00

DOUBLE AA ANNIE K 674'99

DOUBLE AA RETO 554'93

DOUBLE AA ANNIE K 542'88

EPDS					
CE	BW	WW	YW	MM	TM
2.0	3.0	31	60	12	28

PERFORMANCE		
BW	AWW	AYW
90	675	1224

Lot 16 FLEURY BANDOLIER 51B

FAR 51B * BORN 25/04/2014 * REG #1818063

FLEURY ROCK SOLID 63S

sire SASKALTA BANDOLIER 40W

SASKALTA BLACKBIRD 103L

DOUBLE AA BLACKMAN 414'06

dam FLEURY MISS ROYCE 36W

CC MISS ROYCE 2M

JOHNSTON BANDOLIER 170F

DOUBLE AA ELENA 38'02

SASKALTA WINSTON 157F

SASKALTA BLACKBIRD 692F

DOUBLE AA BLACKMAN 292'01

DOUBLE AA ANNIE K 27'00

CC 170F 19K

VALLEYHILLS BLACKCAP 20K

EPDS					
CE	BW	WW	YW	MM	TM
-1.0	3.7	34	61	12	29

PERFORMANCE		
BW	AWW	AYW
94	693	1253



PICTURED ABOVE

Lot 17 FLEURY BARDOLENE 63B

FAR 63B * BORN 27/04/2014 * REG #1818078

DOUBLE AA BARDOLENE 47'04
sire DOUBLE AA BARDOLENE 50'08
 DOUBLE AA ANNIE K 280'96
 DOUBLE AA RITO 21'03
dam DOUBLE AA ANNIE K 36'06
 DOUBLE AA ANNIE K 7360'02

DOUBLE AA BARDOLENE 8'98
 DOUBLE AA ANNIE K 289'02
 ANGUS ACRES WINSTON 249B
 DOUBLE AA ANNIE K 218'92
 DOUBLE AA RITO 206'97
 DOUBLE AA ANNIE K 275'97
 DOUBLE AA BARDOLIER 515'99
 DOUBLE AA ANNIE K 217'99

EPDS					
CE	BW	WW	YW	MM	TM
6.0	4.0	34	63	8	25

PERFORMANCE		
BW	AWW	AYW
89	610	1098

Lot 18 FLEURY BARDOLENE 73B

FAR 73B * BORN 28/04/2014 * REG #1818083

DOUBLE AA BARDOLENE 47'04
sire DOUBLE AA BARDOLENE 50'08
 DOUBLE AA ANNIE K 280'96
 DOUBLE AA BLACKMAN 414'06
dam FLEURY ANNIE K 43Y
 DOUBLE AA ANNIE K 450'06

DOUBLE AA BARDOLENE 8'98
 DOUBLE AA ANNIE K 289'02
 ANGUS ACRES WINSTON 249B
 DOUBLE AA ANNIE K 218'92
 DOUBLE AA BLACKMAN 292'01
 DOUBLE AA ANNIE K 27'00
 PEAK DOT NEW TREND 42M
 DOUBLE AA ANNIE K 527'00

EPDS					
CE	BW	WW	YW	MM	TM
4.9	4.9	31	66	14	30

PERFORMANCE		
BW	AWW	AYW
100	703	1263

BARDOLENE SONS



PICTURED ABOVE

Lot 19 FLEURY BARDOLENE 80B

FAR 80B * BORN 30/04/2014 * REG #1818088

DOUBLE AA BARDOLENE 47'04
sire DOUBLE AA BARDOLENE 50'08
 DOUBLE AA ANNIE K 280'96
 NICHOLS EXTRA H6
dam ROYAL BLACKBIRD 13R
 ROYAL BLACKBIRD 32C

DOUBLE AA BARDOLENE 8'98
 DOUBLE AA ANNIE K 289'02
 ANGUS ACRES WINSTON 249B
 DOUBLE AA ANNIE K 218'92
 N BAR EMULATION EXT
 NICHOLS EILEEN MAY F261
 ROYAL SPECULATION 4A
 ROYAL BLACKBIRD 27Y

EPDS					
CE	BW	WW	YW	MM	TM
4.0	4.0	38	71	17	36

PERFORMANCE		
BW	AWW	AYW
97	747	1282

Lot 20 FLEURY BARDOLENE 115B

FAR 115B * BORN 07/05/2014 * REG #1818110

DOUBLE AA BARDOLENE 47'04
sire DOUBLE AA BARDOLENE 50'08
 DOUBLE AA ANNIE K 280'96
 DOUBLE AA RITO 21'03
dam DOUBLE AA ANNIE K 295'06
 DOUBLE AA ANNIE K 359'03

DOUBLE AA BARDOLENE 8'98
 DOUBLE AA ANNIE K 289'02
 ANGUS ACRES WINSTON 249B
 DOUBLE AA ANNIE K 218'92
 DOUBLE AA RITO 206'97
 DOUBLE AA ANNIE K 275'97
 DOUBLE AA BARDOLIER 550'00
 DOUBLE AA ANNIE K 211'99

EPDS					
CE	BW	WW	YW	MM	TM
8.0	2.7	32	58	10	26

PERFORMANCE		
BW	AWW	AYW
84	685	1195

Lot 21 FLEURY BARDOLENE 143B

FAR 143B * BORN 13/05/2014 * REG #1818127

DOUBLE AA BARDOLENE 47'04
sire DOUBLE AA BARDOLENE 50'08
 DOUBLE AA ANNIE K 280'96
 DOUBLE AA BLACKMAN 414'06
dam FLEURY BLACKLASS 35U
 DOUBLE D BLACKLASS 6M

DOUBLE AA BARDOLENE 8'98
 DOUBLE AA ANNIE K 289'02
 ANGUS ACRES WINSTON 249B
 DOUBLE AA ANNIE K 218'92
 DOUBLE AA BLACKMAN 292'01
 DOUBLE AA ANNIE K 27'00
 C H QUANTUM 3330
 BELL BLACKLASS 13H

EPDS					
CE	BW	WW	YW	MM	TM
6.0	3.8	35	62	18	36

PERFORMANCE		
BW	AWW	AYW
96	822	1301



Lionel & Brenda Duh, Pasture Management

Lot 22 FLEURY BARDOLENE 160B

FAR 160B * BORN 26/05/2014 * REG #1818139

DOUBLE AA BARDOLENE 47'04
sire DOUBLE AA BARDOLENE 50'08
 DOUBLE AA ANNIE K 280'96
 MILL IRON BLACKJACK 727'07
dam FLEURY MISS UNIVERSE 30X
 CC MISS 170 UNIVERSE 73P

DOUBLE AA BARDOLENE 8'98
 DOUBLE AA ANNIE K 289'02
 ANGUS ACRES WINSTON 249B
 DOUBLE AA ANNIE K 218'92
 DOUBLE AA BARDOLIER 322'03
 DOUBLE AA ANNIE K 581'04
 JOHNSTON BANDOLIER 170F
 VALLEYHILLS BLACKCAP 73K

EPDS					
CE	BW	WW	YW	MM	TM
7.0	3.2	32	59	11	27

PERFORMANCE		
BW	AWW	AYW
95	730	1238

Lot 23 FLEURY BARDOLENE 67B

FAR 67B * BORN 27/04/2014 * REG #1818076

BARDOLENE OF PEAK DOT 204R
sire DOUBLE AA BARDOLENE 542'86
 DOUBLE AA ANNIE K 506'81
 DOUBLE AA BLACKMAN 414'06
dam FLEURY BLACKCAP 6W
 DESSA BLACKCAP 33M

BARDOLENE OF PEAK DOT 134N
 QUILL PLAINS PRIDE 26L
 LARKSPUR BAR LAD 1J
 DOUBLE AA ANNIE K 528'78
 DOUBLE AA BLACKMAN 292'01
 DOUBLE AA ANNIE K 27'00
 NORTHLINE GRANITE 95G
 ALLENCROFT BLACKCAP 03 47Z

EPDS					
CE	BW	WW	YW	MM	TM
-8.0	6.2	26	40	8	21

PERFORMANCE		
BW	AWW	AYW
98	703	1184

“AT A YOUNG AGE I KNEW I HAD A PASSION FOR CATTLE AND MY DREAM WAS TO RAISE REGISTERED BLACK ANGUS CATTLE. MY GOALS AND PASSION CONTINUE TO IMPROVE THE GENETICS OF FLEURY CATTLE COMPANY.”

- Matt

BANDOLIER SONS



PICTURED ABOVE

Lot 24 FLEURY BANDOLIER 5B

FAR 5B * BORN 15/04/2014 * REG #1818024

BROOKSIDE BANDOLIER 12U
sire JOHNSTON BANDOLIER 170F
 JOHNSTON MAX TRADITION 370A
 FLEURY ROPER 15T

dam FLEURY MISS FORTUNE 10Y
 FLEURY MISS FORTUNE 24U

ANGUS ACRES BANDOLIER 76N
 BROOKSIDE ROSEBUD 25L
 G T MAXIMUM
 N BAR KINCHTRY BEAUTY 7393
 BLACK WHEEL KRYPTONITE 41P
 FLEURY BLACKCAP 53N
 DOUBLE AA BLACKMAN 414'06
 CC MISS FORTUNE 3M

EPDS					
CE	BW	WW	YW	MM	TM
1.0	3.7	31	60	4	20

PERFORMANCE		
BW	AWW	AYW
87	696	1241

Lot 25 FLEURY BANDOLIER 13B

FAR 13B * BORN 18/04/2014 * REG #1818034

BROOKSIDE BANDOLIER 12U
sire JOHNSTON BANDOLIER 170F
 JOHNSTON MAX TRADITION 370A
 DOUBLE AA BARDOLINE 387'06

dam FLEURY ELENA 9U
 DOUBLE AA ELENA 50'06

ANGUS ACRES BANDOLIER 76N
 BROOKSIDE ROSEBUD 25L
 G T MAXIMUM
 N BAR KINCHTRY BEAUTY 7393
 DOUBLE AA BARDOLINE 47'04
 DOUBLE AA ANNIE K 646'99
 DOUBLE AA BLACKMAN 205'04
 DOUBLE AA ELENA 300'02

EPDS					
CE	BW	WW	YW	MM	TM
7.0	1.4	31	47	0	16

PERFORMANCE		
BW	AWW	AYW
89	629	1120



Tyler Harris
Photography.com

PICTURED ABOVE

Lot 26 FLEURY BANDOLIER 17B

FAR 17B * BORN 19/04/2014 * REG #1818039

BROOKSIDE BANDOLIER 12U

sire JOHNSTON BANDOLIER 170F

JOHNSTON MAX TRADITION 370A

DOUBLE AA BLACKMAN 414'06

dam FLEURY BLACKCAP 10U

DESSA BLACKCAP 33M

ANGUS ACRES BANDOLIER 76N

BROOKSIDE ROSEBUD 25L

G T MAXIMUM

N BAR KINCHTRY BEAUTY 7393

DOUBLE AA BLACKMAN 292'01

DOUBLE AA ANNIE K 27'00

NORTHLINE GRANITE 95G

ALLEN CROFT BLACKCAP 03 47Z

EPDS					
CE	BW	WW	YW	MM	TM
-1.0	4.2	30	48	2	17

PERFORMANCE		
BW	AWW	AYW
89	664	1099

Lot 27 FLEURY BANDOLIER 23B

FAR 23B * BORN 20/04/2014 * REG #1818043

BROOKSIDE BANDOLIER 12U

sire JOHNSTON BANDOLIER 170F

JOHNSTON MAX TRADITION 370A

JL FINAL ANSWER 07030

dam FLEURY BONNIE 20W

FLEURY BONNIE 6T

ANGUS ACRES BANDOLIER 76N

BROOKSIDE ROSEBUD 25L

G T MAXIMUM

N BAR KINCHTRY BEAUTY 7393

S A V FINAL ANSWER 0035

MFA LOLA 118R

EASTONDALE ALLIANCE 57'04

HALCYON BONNIE ERICA 968

EPDS					
CE	BW	WW	YW	MM	TM
5.0	1.1	35	67	8	26

PERFORMANCE		
BW	AWW	AYW
90	772	1284

BRUTUS SONS



PICTURED ABOVE

Lot 28 FLEURY BRUTUS 132B

FAR 132B * BORN 10/05/2014 * REG #1818118

SUITABLE
FOR HEIFERS

HF EL TIGRE 28U

sire RING CREEK BRUTUS 18Z

LADY OF RING CREEK 41U

ANGUS ACRES WINSTON 249B

dam FLEURY ANNIE K 2Z

FLEURY ANNIE K 61X

HF KODIAK 5R

HF ECHO 84R

S A V 004 CAPACITY 5234

LADY OF PEAK DOT 230M

ANGUS ACRES WINSTON 198X

ANGUS ACRES LADY ALLEGRA 58U

DOUBLE AA BARDOLINE 50'08

DOUBLE AA ANNIE K 261'06

EPDS

CE	BW	WW	YW	MM	TM
8.0	2.1	46	75	21	44

PERFORMANCE

BW	AWW	AYW
83	795	1306



HF El Tigre 28U, Sire of Ring Creek Brutus 18Z



BRUTUS & PACESETTER SONS

Lot 29 FLEURY BRUTUS 134B

FAR 134B * BORN 10/05/2014 * REG #1818117

HF EL TIGRE 28U
sire RING CREEK BRUTUS 18Z
 LADY OF RING CREEK 41U
 ANGUS ACRES BANDY 96X
dam FLEURY ANNIE K 39Z
 DOUBLE AA ANNIE K 41'06

HF KODIAK 5R
 HF ECHO 84R
 S A V 004 CAPACITY 5234
 LADY OF PEAK DOT 230M
 ANGUS ACRES BANDOLIER 75T
 ANGUS ACRES LADY 90R
 DOUBLE AA BLACKMAN 205'04
 DOUBLE AA ANNIE K 257'02

EPDS						PERFORMANCE		
CE	BW	WW	YW	MM	TM	BW	AWW	AYW
1.0	3.7	47	73	21	45	87	798	1315

PICTURED AT LEFT

Lot 30 FLEURY PACESETTER 14B

FAR 14B * BORN 18/04/2014 * REG #1818032

WILLABAR AMBUSH 45G
sire LOOKOUT PACESETTER 258M
 GRASSY LANES MILLY 29U
 DOUBLE AA BARDOLENE 285'06
dam FLEURY MISS ROYCE 146Z
 FLEURY MISS ROYCE 36W

PARAMONT AMBUSH 217Z
 WILLABAR COUNTESS 90A
 ED RENE EILEENMERE 45P
 GRASSY LANES MILLY 37S
 DOUBLE AA BARDOLENE 333'03
 DOUBLE AA ANNIE K 580'03
 DOUBLE AA BLACKMAN 414'06
 CC MISS ROYCE 2M

SUITABLE
FOR HEIFERS

EPDS					
CE	BW	WW	YW	MM	TM
2.0	2.0	28	34	14	28

PERFORMANCE		
BW	AWW	AYW
79	697	1112

Lot 31 FLEURY PACESETTER 19B

FAR 19B * BORN 19/04/2014 * REG #1818037

WILLABAR AMBUSH 45G
sire LOOKOUT PACESETTER 258M
 GRASSY LANES MILLY 29U
 DOUBLE AA BLACKMAN 414'06
dam FLEURY MISS PRINCESS 71W
 FLEURY MISS PRINCESS 51S

PARAMONT AMBUSH 217Z
 WILLABAR COUNTESS 90A
 ED RENE EILEENMERE 45P
 GRASSY LANES MILLY 37S
 DOUBLE AA BLACKMAN 292'01
 DOUBLE AA ANNIE K 27'00
 BLACK WHEEL KRYPTONITE 41P
 FLEURY PRINCESS 2P

EPDS					
CE	BW	WW	YW	MM	TM
3.0	1.8	28	45	14	28

PERFORMANCE		
BW	AWW	AYW
86	666	1127

Lot 32 FLEURY PACESETTER 22B

FAR 22B * BORN 20/04/2014 * REG #1818045

WILLABAR AMBUSH 45G
sire LOOKOUT PACESETTER 258M
 GRASSY LANES MILLY 29U
 SASKALTA TRIPLE THREAT 99P
dam DOUBLE AA ANNIE K 370'06
 DOUBLE AA ANNIE K 650'99

PARAMONT AMBUSH 217Z
 WILLABAR COUNTESS 90A
 ED RENE EILEENMERE 45P
 GRASSY LANES MILLY 37S
 SASKALTA TRIPLE THREAT 189L
 SASKALTA EDNA 030K
 DOUBLE AA EXTRA 682'95
 DOUBLE AA ANNIE K 535'95

EPDS					
CE	BW	WW	YW	MM	TM
2.0	1.4	33	42	13	30

PERFORMANCE		
BW	AWW	AYW
86	720	1146

Lot 33 FLEURY PACESETTER 29B

FAR 29B * BORN 20/04/2014 * REG #1818041

WILLABAR AMBUSH 45G
sire LOOKOUT PACESETTER 258M
 GRASSY LANES MILLY 29U
 DOUBLE AA BARDOLENE 50'08
dam FLEURY PRINCESS 95Z
 DOUBLE AA PRINCESS 58'05

PARAMONT AMBUSH 217Z
 WILLABAR COUNTESS 90A
 ED RENE EILEENMERE 45P
 GRASSY LANES MILLY 37S
 DOUBLE AA BARDOLENE 47'04
 DOUBLE AA ANNIE K 280'96
 SASKALTA BARDOLENE 28M
 DOUBLE AA PRINCESS 6'94

SUITABLE
FOR HEIFERS

EPDS					
CE	BW	WW	YW	MM	TM
-1.0	3.1	25	36	13	26

PERFORMANCE		
BW	AWW	AYW
82	646	1105

PACESETTER SONS



PICTURED ABOVE

Lot 34 FLEURY PACESETTER 38B

FAR 38B * BORN 22/04/2014 * REG #1818052

WILLABAR AMBUSH 45G
sire LOOKOUT PACESETTER 258M
 GRASSY LANES MILLY 29U
 DOUBLE AA BLACKMAN 414'06
dam FLEURY ANNIE K 74X
 DOUBLE AA ANNIE K 213'06

PARAMONT AMBUSH 2172
 WILLABAR COUNTESS 90A
 ED RENE EILEENMERE 45P
 GRASSY LANES MILLY 37S
 DOUBLE AA BLACKMAN 292'01
 DOUBLE AA ANNIE K 27'00
 DOUBLE AA BLACKMAN 333'04
 DOUBLE AA ANNIE K 586'02

EPDS					
CE	BW	WW	YW	MM	TM
0.0	2.8	31	47	17	33

PERFORMANCE		
BW	AWW	AYW
92	724	1199

Lot 35 FLEURY PACESETTER 56B

FAR 56B * BORN 25/04/2014 * REG #1818067

WILLABAR AMBUSH 45G
sire LOOKOUT PACESETTER 258M
 GRASSY LANES MILLY 29U
 DOUBLE AA BLACKMAN 80'04
dam DOUBLE AA ANNIE K 324'06
 DOUBLE AA ANNIE K 682'99

PARAMONT AMBUSH 2172
 WILLABAR COUNTESS 90A
 ED RENE EILEENMERE 45P
 GRASSY LANES MILLY 37S
 DOUBLE AA BLACKMAN 252'96
 DOUBLE AA ANNIE K 42'96
 LANCER OF RIDGE LANE 4G
 DOUBLE AA ANNIE K 545'97

EPDS					
CE	BW	WW	YW	MM	TM
2.0	1.7	33	41	15	32

PERFORMANCE		
BW	AWW	AYW
86	727	1137



PICTURED ABOVE

Lot 36 FLEURY TOM BOY 162B

FAR 162B * BORN 28/05/2014 * REG #1818141

ANGUS ACRES TOM BOY 64D
sire SEALIN CREEK TOM BOY 14Y
 SEALIN CREEK ELINE 64N
 PEAK DOT NEW TREND 42M
dam DOUBLE AA ANNIE K 580'06
 DOUBLE AA ANNIE K 533'94

ANGUS ACRES TOM BOY 196Z
 ANGUS ACRES VELVET 65U
 ANGUS ACRES HEADS UP 188L
 SEALIN CREEK ELINE 90L
 S A R NEW TREND 4100 2080
 LADY OF PEAK DOT 615K
 SPRUCE VIEW ESSOTERIC 31A
 DOUBLE AA ANNIE K 645'83

EPDS					
CE	BW	WW	YW	MM	TM
2.0	2.7	35	59	10	28

PERFORMANCE		
BW	AWW	AYW
88	728	1229

Lot 37 FLEURY TOM BOY 69B

FAR 69B * BORN 28/04/2014 * REG #1818080

SUITABLE
FOR HEIFERS

ADELPHI TOM BOY 20H
sire FIGURE 8 ANGUS TOM BOY 278X
 FIGURE 8 ANGUS COUNTESS 278R
 FIGURE 8 ANGUS BARDOLINE 30U
dam FIGURE 8 ANGUS BLACKCAP 168Y
 FIGURE 8 ANGUS BLACKCAP 168P

ADELPHI TOM BOY 20H
 FIGURE 8 ANGUS CLUNYMORE ERICA
 LOOKOUT PACESETTER 147L
 FIGURE 8 ANGUS COUNTESS 278J
 GRASSY LANES BARDOLINE 35M
 FIGURE 8 ANGUS ERICA 052P
 ANGUS ACRES HEADS UP 188L
 FIGURE 8 ANGUS BLACKCAP 168J

EPDS					
CE	BW	WW	YW	MM	TM
5.0	-0.1	21	39	3	14

PERFORMANCE		
BW	AWW	AYW
73	626	1124

ADD MORE POUNDS TO YOUR CALF CROP



FLEURY BULLS

ARE ONE OF OUR MOST STABLE
ASSETS IN OUR FLUCTUATING
MARKET THESE DAYS.

We currently run 5500 mother cows – all Black Angus – in many different areas from swamp land to rugged steep mountain range. The added rib length, red meat, and over-all *performance* is unmatched in our area. They have done more for our operation by adding these components faster than just a strict culling practice on the mother cows. Adding Fleury blood along with our culling has resulted in more profitability through more pounds and thicker calves with the same intake of feed to the mothers. The bulls we have purchased have always been stout and thick with lots of hair and eye appeal.”

Thanks,
Foster Land & Cattle
RIRIE, IDAHO, USA



Lot 38 FLEURY TOM BOY 88B

FAR 88B * BORN 01/05/2014 * REG #1818092

SUITABLE
FOR HEIFERS

FIGURE 8 ANGUS TOM BOY 217N
sire FIGURE 8 ANGUS TOM BOY 278X
FIGURE 8 ANGUS COUNTESS 278R
ANGUS ACRES LAWN ESTON 108R
dam FIGURE 8 ANGUS BARBARA 37U
FIGURE 8 ANGUS BARBARA 189S

ADELPHI TOM BOY 20H
FIGURE 8 ANGUS CLUNYMORE ERICA
LOOKOUT PACESETTER 147L
FIGURE 8 ANGUS COUNTESS 278J
ANGUS ACRES LAWN ESTON 179K
ANGUS ACRES ROYAL COREEN 32G
FIGURE 8 ANGUS PACESETTER 431P
FIGURE 8 ANGUS BARBARA 189P

EPDS					
CE	BW	WW	YW	MM	TM
3.0	0.1	27	47	7	21

PERFORMANCE		
BW	AWW	AYW
83	746	1309

Lot 39 FLEURY TOM BOY 117B

FAR 117B * BORN 07/05/2014 * REG #1818109

FIGURE 8 ANGUS TOM BOY 217N
sire FIGURE 8 ANGUS TOM BOY 278X
FIGURE 8 ANGUS COUNTESS 278R
FIGURE 8 ANGUS BARDOLINE 30U
dam FIGURE 8 ANGUS BARBARA 37X
FIGURE 8 ANGUS BARBARA 37U

ADELPHI TOM BOY 20H
FIGURE 8 ANGUS CLUNYMORE ERICA
LOOKOUT PACESETTER 147L
FIGURE 8 ANGUS COUNTESS 278J
GRASSY LANES BARDOLINE 35M
FIGURE 8 ANGUS ERICA 052P
ANGUS ACRES LAWN ESTON 108R
FIGURE 8 ANGUS BARBARA 189S

EPDS					
CE	BW	WW	YW	MM	TM
-1.0	2.2	20	40	3	13

PERFORMANCE		
BW	AWW	AYW
91	615	1175

30



*Tyler Harris
Photography.com*

PICTURED ABOVE

Lot 40 FLEURY ERIC 131B

FAR 131B * BORN 10/05/2014 * REG #1818119

ANGUS ACRES ERIC 78U

sire REMINGTON BLACK TOP ERIC 56Y

ANGUS ACRES TAYLOR MADE 42L

BLACK WHEEL KRYPTONITE 41P

dam FLEURY BLACKCAP 63W

FLEURY BLACKCAP 3P

BLACKTOF ERIC 15S

ANGUS ACRES STARTEL 178K

ANGUS ACRES TAYLOR MADE 53E

ANGUS ACRES ROYAL LADY 42F

F A R KRUGERRAND 410H

CRESCENT CREEK JESTRESS 128F

JOHNSTON BANDOLIER 170F

SASKALTA BLACKCAP 048K

EPDS					
CE	BW	WW	YW	MM	TM
0.0	2.3	30	64	9	24

PERFORMANCE		
BW	AWW	AYW
93	688	1214

Lot 41 FLEURY ERIC 139B

FAR 139B * BORN 12/05/2014 * REG #1818124

ANGUS ACRES ERIC 78U

sire REMINGTON BLACK TOP ERIC 56Y

ANGUS ACRES TAYLOR MADE 42L

SASKALTA TRIPLE THREAT 99P

dam DOUBLE AA ANNIE K 420'06

DOUBLE AA ANNIE K 606'00

BLACKTOF ERIC 15S

ANGUS ACRES STARTEL 178K

ANGUS ACRES TAYLOR MADE 53E

ANGUS ACRES ROYAL LADY 42F

SASKALTA TRIPLE THREAT 189L

SASKALTA EDNA 030K

DOUBLE AA BARDOLIER 13'98

DOUBLE AA ANNIE K 527'96

EPDS					
CE	BW	WW	YW	MM	TM
-3.0	3.8	26	51	10	23

PERFORMANCE		
BW	AWW	AYW
99	689	1202

ERIC SONS



PICTURED ABOVE

Lot 42 FLEURY ERIC 102B

FAR 102B * BORN 04/05/2014 * REG # 1890722

ANGUS ACRES ERIC 78U

sire REMINGTON BLACK TOP ERIC 56Y

ANGUS ACRES TAYLOR MADE 42L

DOUBLE AA BLACKMAN 205'04

dam DOUBLE AA ANNIE K 41'06

DOUBLE AA ANNIE K 257'02

BLACKTOF ERIC 15S

ANGUS ACRES STARTEL 178K

ANGUS ACRES TAYLOR MADE 53E

ANGUS ACRES ROYAL LADY 42F

DOUBLE AA BLACKMAN 252'96

DOUBLE AA ANNIE K 566'98

DOUBLE AA BARDOLINE 587'98

DOUBLE AA ANNIE K 82'93

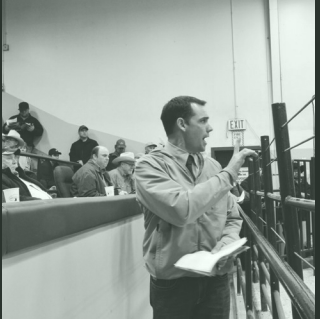
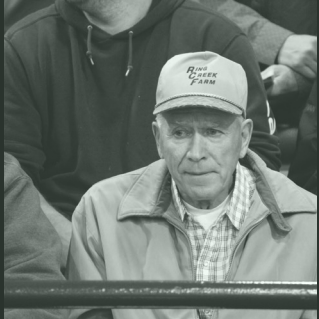
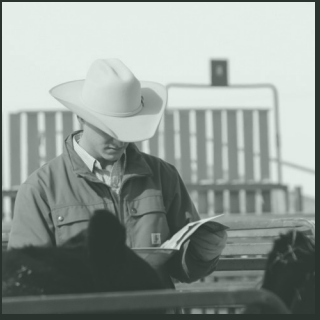
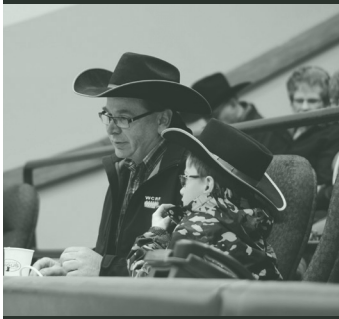
EPDS

CE	BW	WW	YW	MM	TM
1.0	1.6	18	42	13	25

PERFORMANCE

BW	AWW	AYW
89	644	1156







3

*The Brand
of Quality*



OFFERING 50 REPLACEMENT FEMALES

Saskatoon Livestock Sales Express Replacement Heifer Sale, April 15 at 12 Noon

Russ and Tamara Carter, along with their children, run a 300 head commercial cow/calf operation on their ranch at Lacadena. The ranch encompasses over 6000 acres of native grass running along the South Saskatchewan River. Cattle on their ranch have to be environmentally efficient, utilize forages well, and demonstrate strong maternal properties and easy calving with good udders. Carters have been long time customers of Rancher's Choice Bulls and in 2012 started purchasing quality bulls from Fleury Cattle Company. These bulls have provided the performance, size, efficiency, and maternal traits that the Carters value. Uniform quality, consistency, weaning weights, feed efficiency, and overall profitability continue to increase with Fleury bulls and have made Carters repeat customers. Although the Carter Ranch experienced the worst drought in over 25 years in 2015, the steer calves that sold in fall were sorted into two groups: 40 head averaging 647 lbs and 74 averaging 551 lbs without creep feeding. These animals can perform in the harshest conditions.

VACCINE PROTOCOL Carters follow a strict vaccine protocol which includes Bovishield One Shot and Vision 7 Somnus at branding for calves, with a booster in fall prior to weaning, along with Ivomec or Safeguard. Breeding stock receives Bovishield FPVL 5, and Covexin 30 days pre-breeding. Ivomec is administered in the fall.

REPLACEMENT HEIFERS Carters develop replacement heifers carefully with steady growth, longevity, and sustained profitability in mind. All vaccinations are boosted in the fall while still on the cow to ensure the best immune response. Once weaned, they receive the highest quality forages and a comprehensive mineral package to ensure strong immune systems and overall health. The heifers demonstrate strong maternal characteristics, efficient feed use, and a steady rate of growth. They are handled in a low stress manner that keeps their immune systems strong and allows safe handling. Bulls are turned out July 1st and the breeding herd is exposed to bulls for 60 days to keep a tight calving window. Heifers are exposed for 45 days. Only the most fertile animals are retained in the herd. Last year 100% of heifers exposed were with calf at preg checking. A select group is on offer this year at SLS on April 15.

For more information prior to the sale, please contact Carters at cartercattle@xplornet.com or 306-574-4908.



Matthew Fleury
Box 177 Aberdeen
Saskatchewan S0K 0A0

